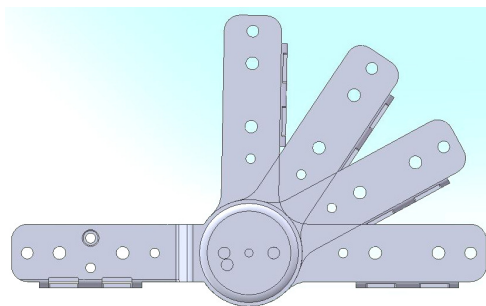
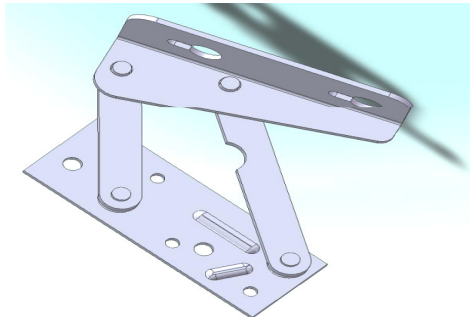
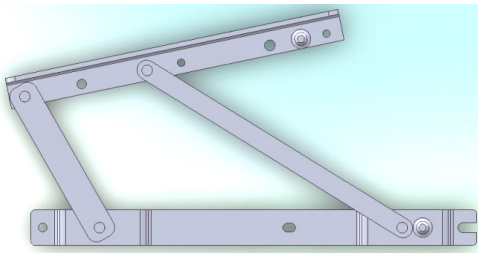


# End Fittings Catalogue



## contact

able goods

Gummiprofile | Gasfedern | Aluminiumprofile | Rollen+Räder | und mehr  
rubber profiles | gas springs | aluminium profiles | castors+wheels | and more

E. Ilter Dipl.-Ing.(FH)

Kolpingstr. 46

D-41462 Neuss

Ust-idNr.: DE247723134

Economic Operators Registration

and Identification Number: DE000000007244339

+49 (0)2131-4740547

skype: able-goods

info@able-goods.de

www.able-goods.de

## Our Production Program

### **INOX End Fittings**

#### **INOX 303, 304 & 316**

- Brackets (Electro Polishing available)
- Forks – Clevises – **DIN 71752**
- Ball Screws – **DIN 71803**
- Eyelets
- Ball Joints – **DIN 71802**
- Plastic ball joints with stainless steel clips

### **Standard Metal & Plastic End Fittings**

- Brackets
- Plastic Brackets
- Forks – Clevises - **DIN 71752**
- Pins for Clevises
- Ball Screws – **DIN 71803**
- Eyelets (Metal & Plastic)
- Plastic ball cups
- Metal Ball joints – **DIN 71802**
- Axial Joint heads – **DIN 71802**

### **Gas Springs**

- Standard lift gas springs – **INOX 316 & INOX 304**

- Standard lift gas springs (Rod diameter from 6mm up to 14mm)
- Standard lift gas springs with protection tube
- Standard lift gas springs with locking tube
- Traction lift gas springs
- Adjustable pressure gas springs
- Blockable gas springs Elastic
- Blockable gas springs Rigid in Extension
- Blockable gas springs Rigid in Compression
- Blockable gas springs Lock pin on tube side
- Blockable gas springs Traction

### **Mechanisms**

- Recliner Mechanisms
- Sofabed Mechanisms

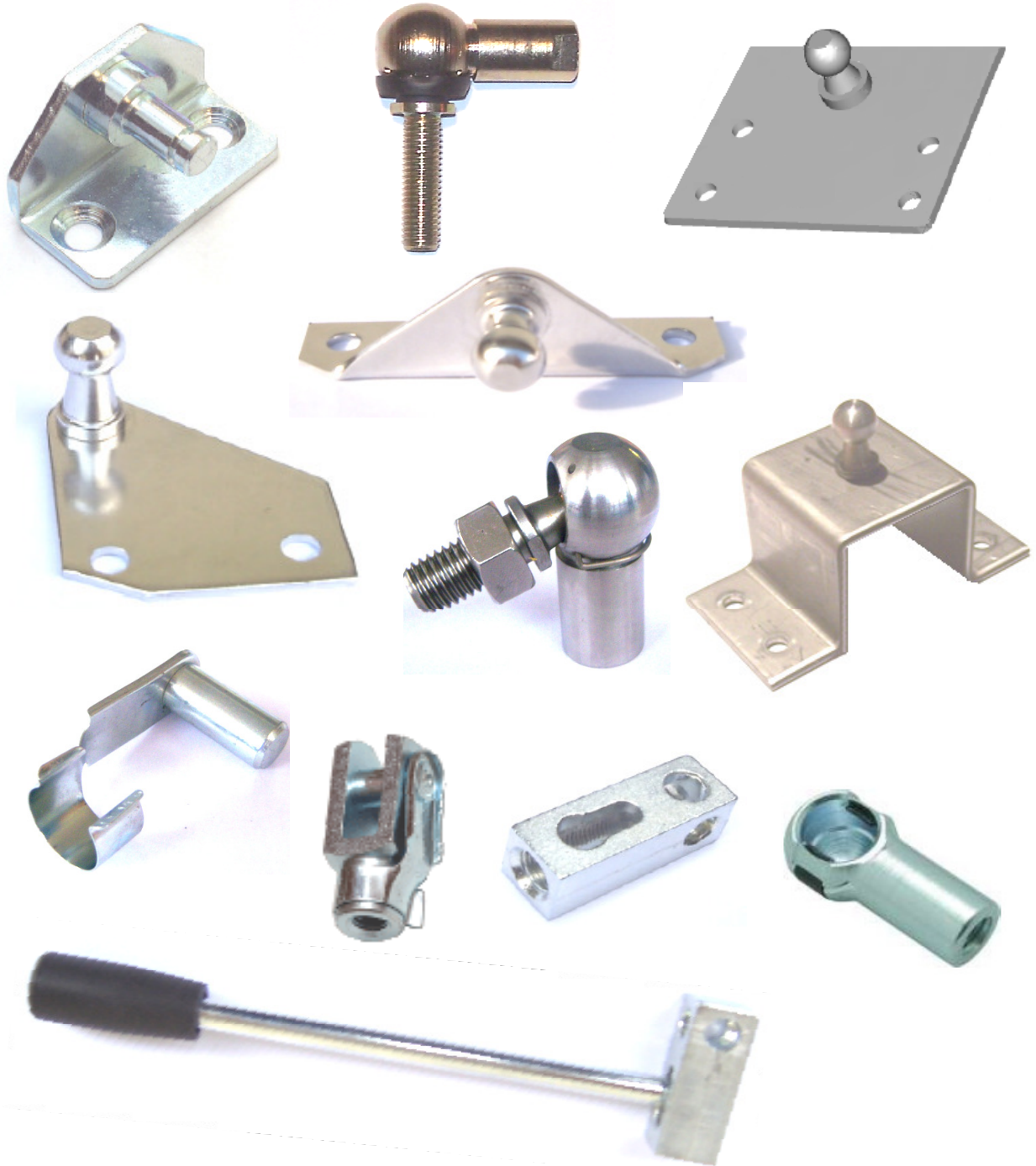
# \*\*\*NEW ITEMS\*\*\*

**Ears believe others, Eyes believe themselves...**

\*\*\*We invite you to visit our facilities at your best convenience time\*\*\*

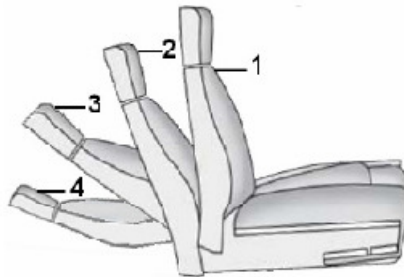
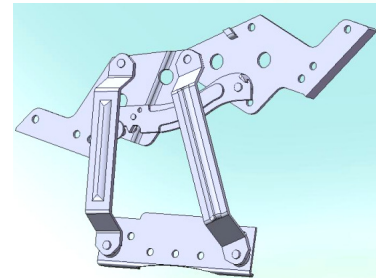
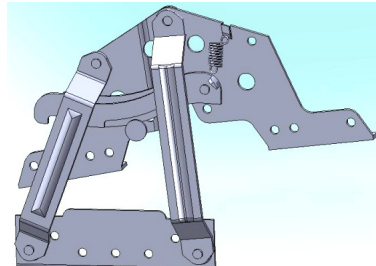
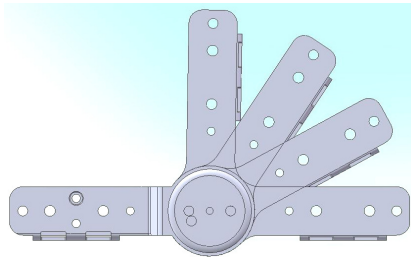
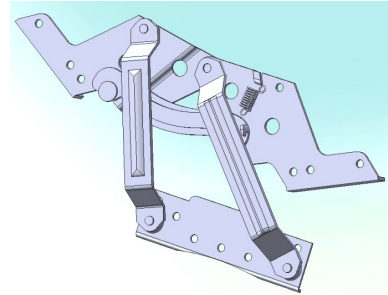
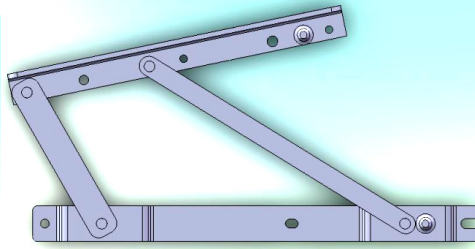
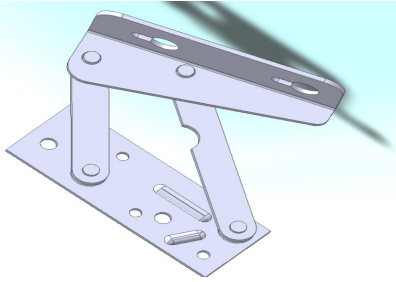
- Stainless Ball Cups, DIN 71802 – **New!!!**  
AISI 303, AISI 304, AISI 316
  - Stainless Ball Screws, DIN 71803– **New!!!**  
AISI 303, AISI 304, AISI 316
  - Stainless Clevises (Fork Heads), DIN 71752– **New!!!**  
AISI 303, AISI 304
  - Stainless Steel Eyelets– **New!!!**  
AISI 303, AISI 304, AISI 316
  - Stainless Steel Brackets– **New!!!**  
AISI 303, AISI 304, AISI 316
  - Plastic Ball Cups with Stainless Clips– **New!!!**  
AISI 301
  - Plastic Ball Cups Head Diameter 8mm– **New!!!**
  - ES-Bolts for Clevis, Fork Head DIN 71752– **New!!!**
  - Recliner Mechanisms, SofaBed Mechanisms–**New!!!**
- For full catalogue, contact us or visit our website**
- Ball Cups With Sealing, DIN 71802 –**New!!!**

**Few of New Items are as following.**



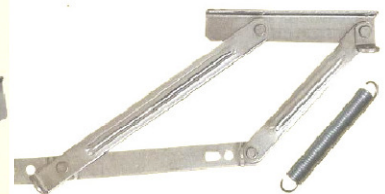
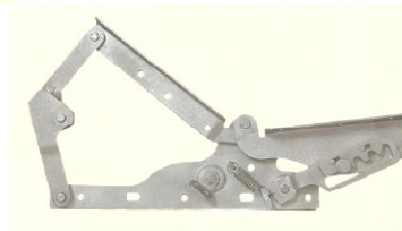
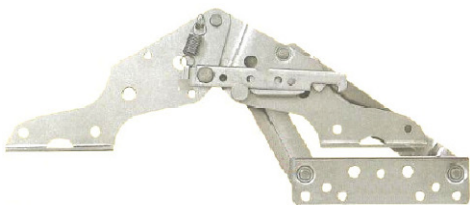
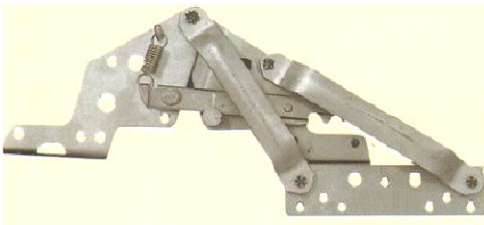
**\*\*\*Please contact us for your new projects or for current items you have problem regarding quality and you pay expensive amounts.\*\*\***

# Recliner Mechanisms & SofaBed Mechanisms



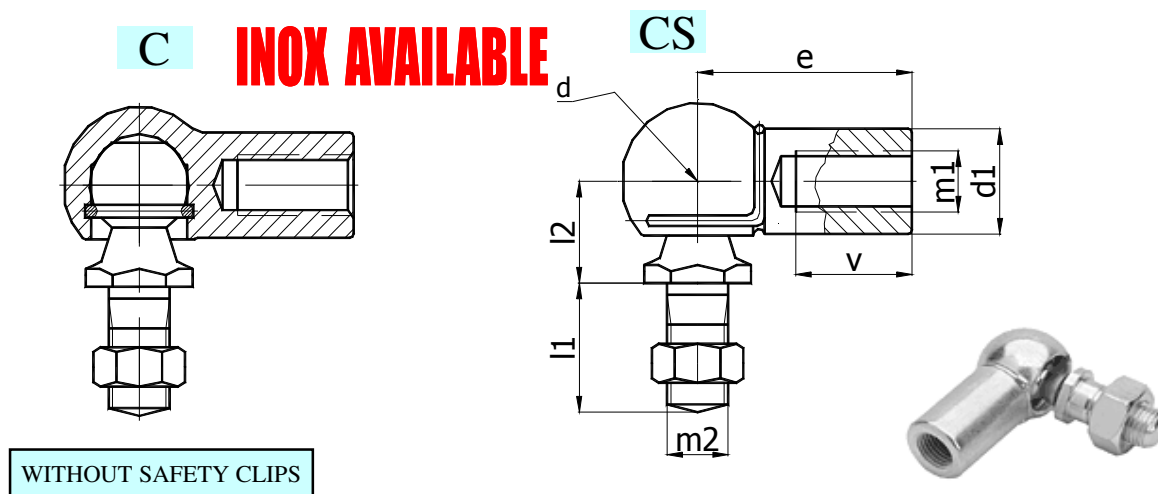
Closed

Open





## BALL JOINTS HEX



### C-CS BALL JOINTS-BALL STUD WITH HEXAGONAL

Standard based on DIN 71802 - Metric sizes

For a quotation, please look at below types and select the part number(s) you require.

Material: 11S Mn Pb 30K (SAE 12L14),

Protective Finish: Zinc plated and yellow, white or black passivated. The assembly is lubricated.

You can look at technical pages for further information. See; Technical Pages.

CODE		d H9/h9	m1	m2	l1	l2	d1	e	v	sw	weight (g)
HT1	HTS1	Ø8	M5	M5	10	9	8	22	10,2	8	15,2
HT2	HTS2	Ø10	M6	M6	13	11	10	25	11,5	10	25,2
HT2-M8	HTS2-M8	Ø10	M8	M8	13	11	10	25	11,5	13	25,2
HT2-21-M6	HTS2-21-M6	Ø10	M6	M6	12	11	10	21	11,5	10	22,2
HT2-21-M8	HTS2-21-M8	Ø10	M6	M8	13	11	10	21	11,5	13	22,2
HT2-19-M6	HTS2-19-M6	Ø10	M6	M8	13	11	10	19	11,5	13	20,2
HT2-19-M8	HTS2-19-M8	Ø10	M8	M8	13	11	10	19	11,5	13	20,2
HT2-18-M6	HTS2-18-M6	Ø10	M6	M6	12	11	10	18	11,5	10	19,2
HT2-18-M8	HTS2-18-M8	Ø10	M6	M8	13	11	10	18	11,5	13	19,2
HT3-25	HTS3-25	Ø13	M8	M8	16	13	13	25	14	13	45,3
HT3	HTS3	Ø13	M8	M8	16	13	13	30	14	13	53,1
HT4	HTS4	Ø16	M10	M10	19	16	16	35	15,5	17	103,8
HT5	HTS5	Ø16	M12	M12	19	16	16	35	15,5	17	103,8
HT6	HTS6	Ø19	M14X1.5	M14X1.5	27	20	22	45	21,5	20	220,9
HT7	HTS7	Ø19	M14X2	M14X2	27	20	22	45	21,5	20	220,9
HT8	HTS8	Ø19	M16	M16	27	20	22	45	21,5	20	220,9

**C**

**CS**

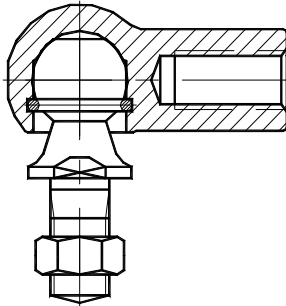
**Special orders are acceptable. A technical drawing or a sample would be enough to produce**

If you have any question, demand or queries, please do not hesitate to contact us.

## BALL JOINTS

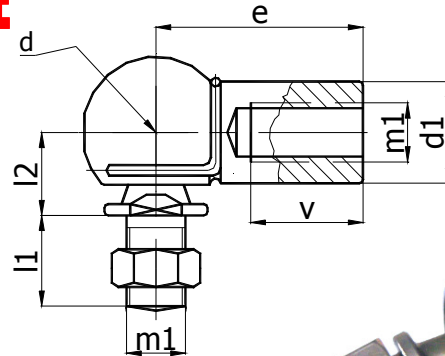
C

**INOX AVAILABLE**



WITHOUT SAFETY CLIPS

CS



### C-CS BALL JOINTS

Standard based on DIN 71802 - Metric sizes

**For a quotation, please look at below types and select the part number(s) you require.**

**Material:** 11S Mn Pb 30K (SAE 12L14),

**Protective Finish:** Zinc plated and yellow, white or black passivated. The assembly is lubricated.

**You can look at technical pages for further information. See; Technical Pages.**

CODE		d H9/h9	m1	l1	l2	d1	e	v	sw	weight (g)
T1	TS1	Ø8	M5	10	9	8	22	10,2	7	15,2
T2	TS2	Ø10	M6	12	11	10	25	11,5	8	25,2
T3	TS3	Ø13	M8	16	13	13	30	14	11	53,1
T4	TS4	Ø16	M10	19	16	16	35	15,5	13	103,8
T5	TS5	Ø16	M12	19	16	16	35	15,5	13	103,8
T6	TS6	Ø19	M14X1.5	27	20	22	45	21,5	16	220,9
T7	TS7	Ø19	M14X2	27	20	22	45	21,5	16	220,9
T8	TS8	Ø19	M16	27	20	22	45	21,5	16	220,9

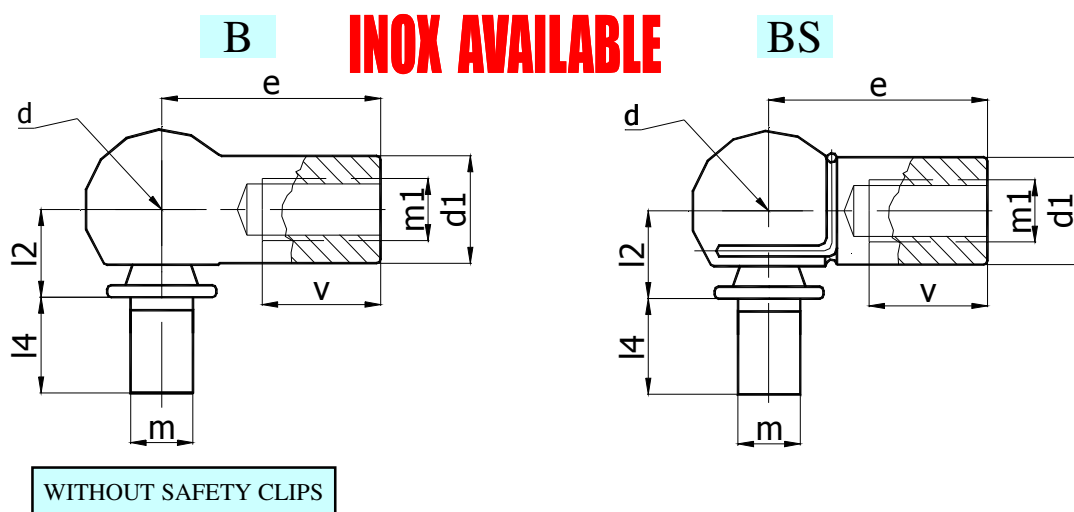
C

CS

**Special orders are acceptable. A technical drawing or a sample would be enough to produce**

If you have any question, demand or queries, please do not hesitate to contact us.

## BALL JOINTS



### B-BS BALL JOINTS

Standard based on DIN 71802 - Metric sizes

For a quotation, please look at below types and select the part number(s) you require.

Material: 11S Mn Pb 30K (SAE 12L14),

Protective Finish: Zinc plated and yellow, white or black passivated. The assembly is lubricated.

You can look at technical pages for further information. See; Technical Pages.

OEM CODE		d H9/h9	m1	m h11	l2	l4	d1	e	v	weight (g)
TR1	TRS1	Ø8	M5	5	9	4	8	22	10,2	12,9
TR2	TRS2	Ø8	M5	5	9	7,5	8	22	10,2	13,4
TR3	TRS3	Ø10	M6	6	11	4,5	10	25	11,5	21,3
TR4	TRS4	Ø10	M6	6	11	8	10	25	11,5	22
TR5	TRS5	Ø13	M8	8	13	5	13	30	14	43,2
TR6	TRS6	Ø13	M8	8	13	10	13	30	14	45
TR7	TRS7	Ø16	M10	10	16	6	16	35	15,5	82,3
TR8	TRS8	Ø16	M10	10	16	13	16	35	15,5	86,6
TR9	TRS9	Ø16	M12	10	16	6	16	35	15,5	82,3
TR10	TRS10	Ø16	M12	10	16	13	16	35	15,5	86,6
TR11	TRS11	Ø19	M14X1.5	14	20	12	22	45	21,5	181
TR12	TRS12	Ø19	M14X2	14	20	12	22	45	21,5	181
TR13	TRS13	Ø19	M16	14	20	18	22	45	21,5	189

**B** **BS**

**Special orders are acceptable. A technical drawing or a sample would be enough to produce**

If you have any question, demand or queries, please do not hesitate to contact us.

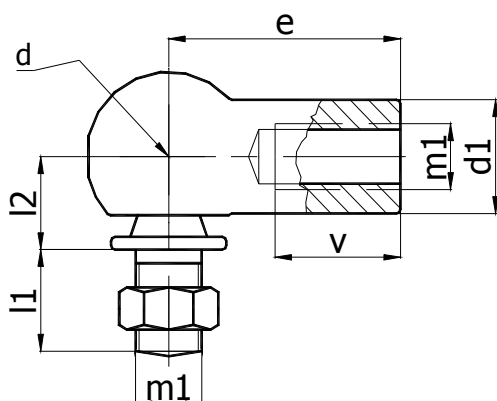


## BALL JOINTS

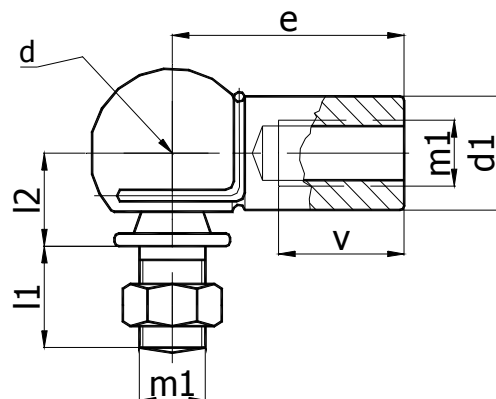
A

**INOX AVAILABLE**

AS



WITHOUT SAFETY CLIPS



### A-AS BALL JOINTS

Standard based on DIN 71802 - Metric sizes

**For a quotation, please look at below types and select the part number(s) you require.**

**Material:** 11S Mn Pb 30K (SAE 12L14),

**Protective Finish:** Zinc plated and yellow, white or black passivated. The assembly is lubricated.

**You can look at technical pages for further information. See; Technical Pages.**

CODE	d H9/h9	m2	l1	l2	d1	e	v	weight (g)
TA1 TAS1	Ø8	M5	10	9	8	22	10,2	15,2
TA2 TAS2	Ø10	M6	12	11	10	25	11,5	25,2
TA3 TAS3	Ø13	M8	16	13	13	30	14	53,1
TA4 TAS4	Ø16	M10	19	16	16	35	15,5	103,8
TA5 TAS5	Ø16	M12	19	16	16	35	15,5	103,8
TA6 TAS6	Ø19	M14X1.5	27	20	22	45	21,5	220,9
TA7 TAS7	Ø19	M14X2	27	20	22	45	21,5	220,9
TA8 TAS8	Ø19	M16	27	20	22	45	21,5	220,9

A

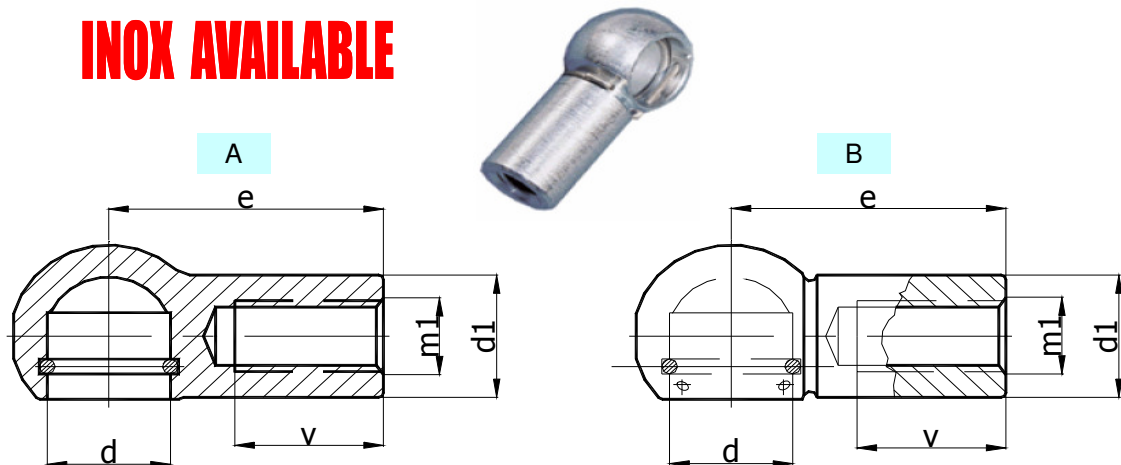
AS

**Special orders are acceptable. A technical drawing or a sample would be enough to produce**

If you have any question, demand or queries, please do not hesitate to contact us.

# BALL SOCKET

**INOX AVAILABLE**



## BALL SOCKET A AND B FORM

Standard based on DIN 71805 - Metric sizes

For a quotation, please look at below types and select the part number(s) you require.

Below codes for B types. You should add "A" for types A. RD1-A

Material: 11S Mn Pb 30K (SAE 12L14),

Protective Finish: Zinc plated and yellow, white or black passivated.

You can look at technical pages for further information. See; Technical Pages.

CODE	d h9	m1	e	v	d1	weight (g)	FORM B
RD1	Ø8	M5	22	10,2	8	9,0	
RD2	Ø10	M6	25	11,5	10	14,2	
RD2-M8	Ø10	M8	25	11,5	10	14,2	
RD2-18-M6	Ø10	M6	18	11,5	10	10,2	
RD2-19-M8	Ø10	M8	19	11,5	10	10,2	
RD2-19-M6	Ø10	M6	19	11,5	10	10,2	
RD2-21-M6	Ø10	M6	21	11,5	10	11,2	
RD2-21-M8	Ø10	M8	21	11,5	10	11,2	
RD2-22-M6	Ø10	M6	22	11,5	10	12,2	
RD2-22-M8	Ø10	M8	22	11,5	10	12,2	
RD3	Ø13	M8	30	14	13	29,0	
RD3-M10	Ø13	M10	30	14	13	29,0	
RD3-25	Ø13	M8	25	14	13	29,0	
RD4	Ø16	M10	35	15,5	16	57,0	
RD4-M8	Ø16	M8	35	15,5	16	57,0	
RD4-30	Ø16	M10	30	15,5	16	50,0	
RD4-30-M8	Ø16	M8	30	15,5	16	50,0	
RD5	Ø16	M12	35	15,5	16	57,0	
RD6	Ø19	M14X1.5	45	21,5	22	125,0	
RD7	Ø19	M14X2	45	21,5	22	125,0	
RD8	Ø19	M16	45	21,5	22	125,0	

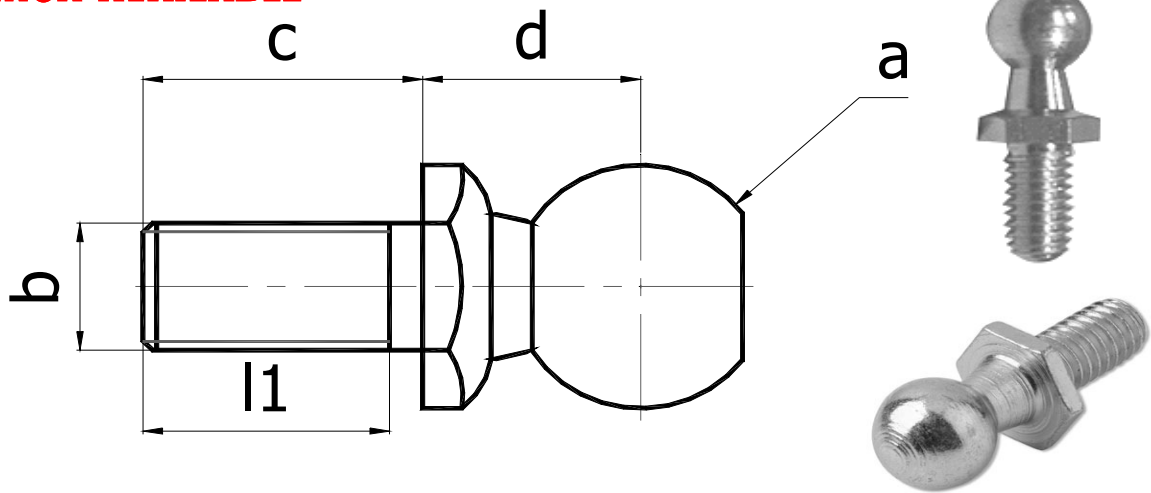
FORM A : THE SAFETY CLIP IS NOT ON THE BALL SOCKET

**Special orders are acceptable. A technical drawing or a sample would be enough to produce**

If you have any question, demand or queries, please do not hesitate to contact us.

## BALL STUD-HEX

**INOX AVAILABLE**



### BALL STUD WITH HEXAGONAL

Standard based on DIN 71803 - Metric sizes

**For a quotation, please look at below types and select the part number(s) you require.**

**Material:** 11S Mn Pb 30K (SAE 12L14),

**Protective Finish:** Zinc plated and yellow, white or black passivated.

**You can look at technical pages for further information. See; Technical Pages.**

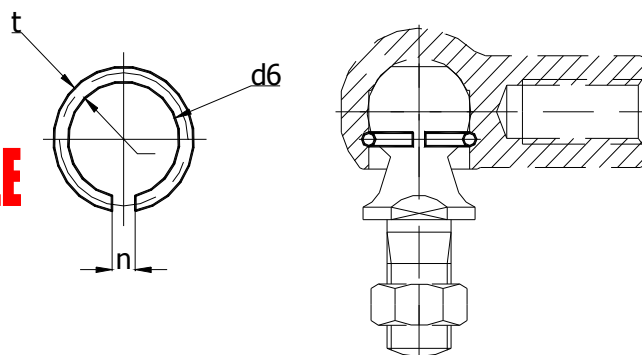
CODE	a/h9	b	d	c	l1	sw	weight (g)
TOR1	Ø8	M5	9	10	8	8	15,2
TOR2	Ø10	M6	11	12	10	10	25,2
TOR3	Ø10	M8	11	12	10	10	25,2
TOR3-13	Ø10	M8	11	12	10	13	25,2
TOR4	Ø13	M8	13	16	14	13	53,1
TOR5	Ø16	M10	16	19	16	17	103,8
TOR6	Ø16	M12	16	19	16	17	103,8
TOR7	Ø19	M14X1.5	20	28	17	19	220,9
TOR8	Ø19	M14X2	20	28	17	19	220,9
TOR9	Ø19	M16	20	28	17	19	220,9

**Special orders are acceptable. A technical drawing or a sample would be enough to produce**

If you have any question, demand or queries, please do not hesitate to contact us.

## BALL CUP

**INOX AVAILABLE**



OEM CODE	Description	d6	t	n	weight (g)
TN1	R 8	7.2	1.0	3.9	0.14
TN2	R10	8.9	1.2	4.5	0.26
TN3	R13	11.2	1.5	4.7	0.56
TN4	R16	13.9	1.8	5.5	0.93
TN5	R19	17.0	2.0	7.5	1.39

### BALL CUP and SAFETY CLIP

Standard based on DIN 71805

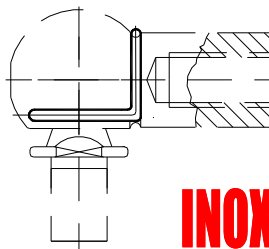
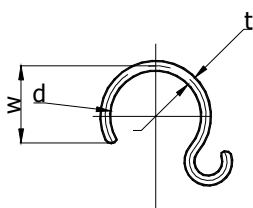
For a quotation, please look at below types and select the part number(s) you require.

Material: DIN 17223

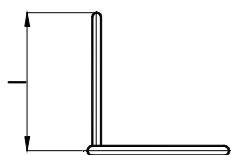
Protective Finish: Zinc plated and yellow, white or black passivated.

You can look at technical pages for further information. See; Technical Pages.

## SAFETY CLIP



**INOX AVAILABLE**

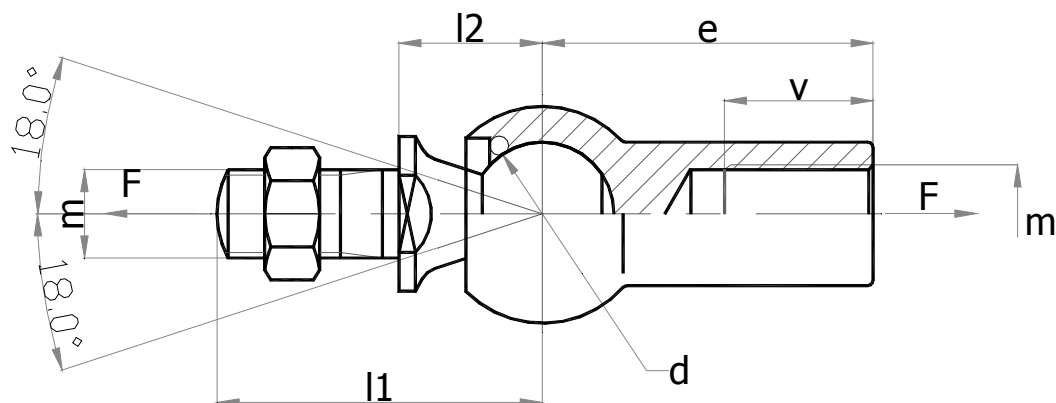


OEM CODE	Description	d	t	w	l	weight (g)
TRN1	S 8	7,0	1,0	6,5	12,0	0,21
TRN2	S 10	8,7	1,0	7,7	12,5	0,24
TRN3	S 13	11,0	1,2	9,5	15,7	0,46
TRN4	S 16	13,0	1,4	11,0	19,0	0,77
TRN5	S 19	20,0	1,5	16,5	24,0	1,10

**Special orders are acceptable. A technical drawing or a sample would be enough to produce**

If you have any question, demand or queries, please do not hesitate to contact us.

## AXIAL BALL JOINTS



### AXIAL BALL JOINT

Standard based on DIN 71802 - Metric sizes

**For a quotation, please look at below types and select the part number(s) you require.**

**Material:** 11S Mn Pb 30K (SAE 12L14),

**Protective Finish:** Zinc plated and yellow, white or black passivated. The assembly is lubricated.

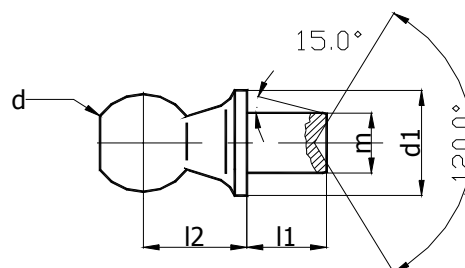
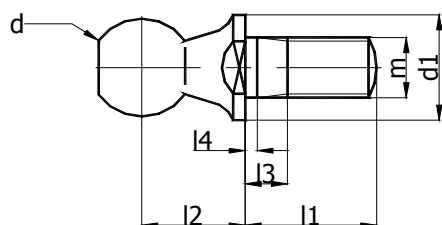
**You can look at technical pages for further information. See; Technical Pages.**

CODE	d h9	m1	e	l1	l2	v	Pull Force (N)	weight (g)
ORN1	Ø8	M5	22	19,2	9	10,2	30	15,2
ORN2	Ø10	M6	25	23,5	11	11,5	40	25,2
ORN3	Ø13	M8	30	29,5	13	14,0	60	53,1
ORN4	Ø16	M10	35	36	16	15,5	80	103,8
ORN5	Ø19	M14x1.5	45	48	20	21,5	100	220,9

**Special orders are acceptable. A technical drawing or a sample would be enough to produce**

If you have any question, demand or queries, please do not hesitate to contact us.

## BALL STUD



**INOX AVAILABLE**

**FORM C**

**FORM B**

CODE	d h9	m	l1	l2	d1	l4 min	l3 max	sw	weight (g)	<b>FORM C</b>
R1	Ø8	M5	10,2	9	8	1,2	4,0	7	4,55	
R2	Ø10	M6	12,5	11	10	1,2	4,0	8	8,5	
R3	Ø13	M8	16,5	13	13	1,5	5,3	11	17,7	
R4	Ø16	M10	20,0	16	16	2,5	7,3	13	35,1	
R5	Ø16	M12	20,0	16	16	2,5	7,3	13	35,1	
R6	Ø19	M14X1.5	28,0	20	19	5	10,8	16	71,2	
R7	Ø19	M14X2	28,0	20	19	5	10,8	16	71,2	
R8	Ø19	M16	28,0	20	19	5	10,8	16	71,2	

CODE	d h9	l1	l2	m h11	d1	weight (g)	<b>FORM B</b>
OR1	Ø8	4,0	9	5	8	3,85	
OR2	Ø8	7,5	9	5	8	4,35	
OR3	Ø10	4,5	11	6	10	7,1	
OR4	Ø10	8,0	11	6	10	7,8	
OR5	Ø13	5,0	13	8	13	14,2	
OR6	Ø13	10,0	13	8	13	16	
OR7	Ø16	6,0	16	10	16	23,5	
OR8	Ø16	13,0	16	10	16	29,6	
OR9	Ø19	12,0	20	14	19	56,2	
OR10	Ø19	18,0	20	14	19	63,7	

### BALL STUD

Standard based on DIN 71803 - Metric sizes

**For a quotation, please look at below types and select the part number(s) you require.**

**Material:** 11S Mn Pb 30K (SAE 12L14),

**Protective Finish:** Zinc plated and yellow, white or black passivated.

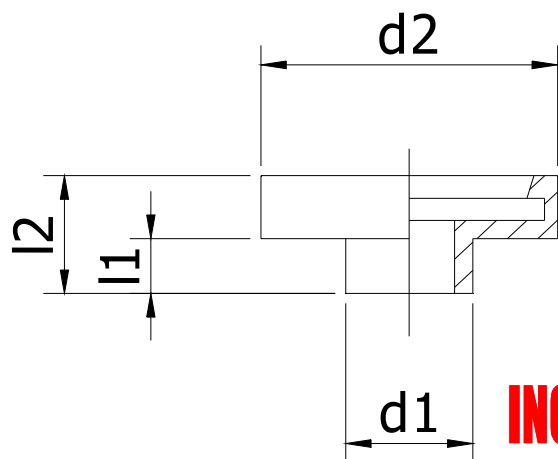
**You can look at technical pages for further information. See; Technical Pages.**

**Special orders are acceptable. A technical drawing or a sample would be enough to produce**

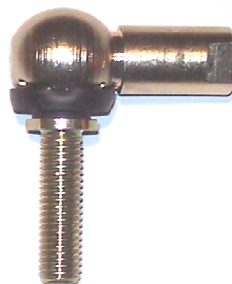
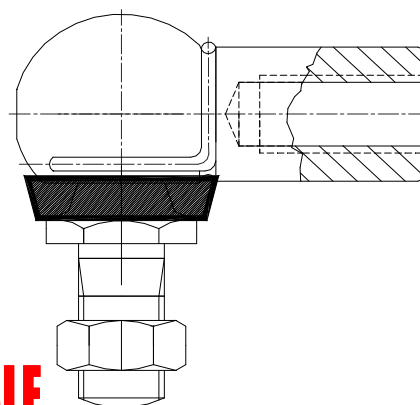
If you have any question, demand or queries, please do not hesitate to contact us.



## SEALING CAP



**INOX AVAILABLE**



CODE	d h9	d2	d1	l2	l1	weight KG/1000pcs
DO1	Ø8	12,0	5,5	4,5	1,5	0,240
DO2	Ø10	13,5	6,5	6,5	3,5	0,368
DO3	Ø13	17,5	7,5	7,5	3,5	0,847
DO4	Ø16	22,0	8,5	8,5	4,5	1,066
DO5	Ø19	25,5	12,5	12,5	7,0	1,975

### SEALING CAP

Protection against dust, dirt, water splashes, vapours.

For a quotation, please look at types and select the part number(s) you require.

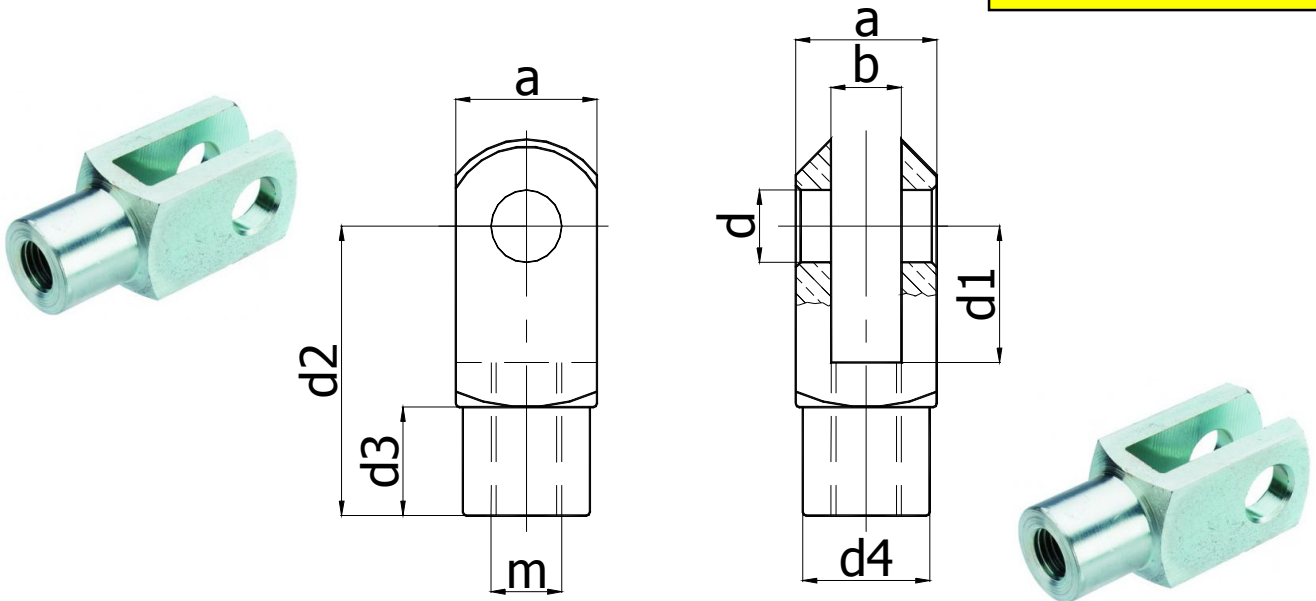
Material: Neoprene

You can look at technical pages for further information. See; Technical Pages.

**Special orders are acceptable. A technical drawing or a sample would be enough to produce**

If you have any question, demand or queries, please do not hesitate to contact us.

## CLEVISES



### CLEVISES

Standard based on DIN 71752 - Metric sizes

**For a quotation, please look at below types and select the part number(s) you require.**

**Material:** 11S Mn Pb 30K (SAE 12L14),

**Protective Finish:** Zinc plated and yellow, white or black passivated.

**You can look at technical pages for further information. See; Technical Pages.**

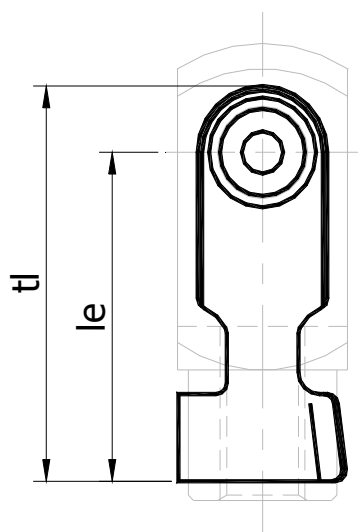
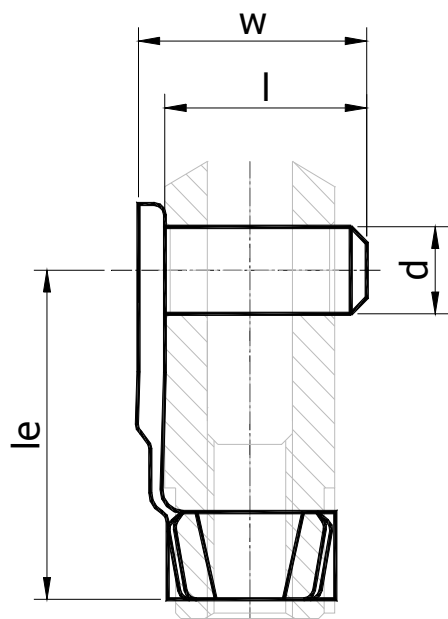
**With metric fine-pitch thread, m=M8x1,25 only add "FP" on the code. TO7FP**

CODE	m 6H	a	d H9	b	d2	d4	d3	d1	m 6H	Weight (gr.)
TO1	4X8	8	4	4	16	8	6	8	M 4	5
TO2	4X16	8	4	4	24	8	6	16	M 4	7
TO3	5X10	10	5	5	20	9	7,5	10	M 5	9
TO4	5X20	10	5	5	30	9	7,5	20	M 5	12
TO5	6X12	12	6	6	24	10	9	12	M 6	15
TO6	6X24	12	6	6	36	10	9	24	M 6	20
TO7	8X16	16	8	8	32	14	12	16	M 8	36
TO8	8X32	16	8	8	48	14	12	32	M 8	52
TO9	10X20	20	10	10	40	18	15	20	M 10	72
TO10	10X40	20	10	10	60	18	15	40	M 10	102
TO11	12X24	24	12	12	48	20	18	24	M 12	115
TO12	12X48	24	12	12	72	20	18	48	M 12	167
TO13	14X28	27	14	14	56	24	22,5	28	M14	171
TO14	14X56	27	14	14	85	24	22,5	56	M14	250
TO15	16X32	32	16	16	64	26	24	32	M16	268
TO16	16X64	32	16	16	96	26	24	64	M16	392
TO17	20X40	40	20	20	80	34	30	40	M20X2,5	520
TO18	25X50	50	25	25	100	42	36	50	M24X3,0	1080
TO19	28X56	55	28	28	112	48	40	56	M27X3,0	1500
TO20	30X60	60	30	30	120	52	42	60	M30X3,5	1940
TO21	36X72	70	35	35	144	60	54	72	M36X4,0	2950
TO22	42X84	85	42	42	168	70	64	84	M42X4,5	6100

**Special orders are acceptable. A technical drawing or a sample would be enough to produce**

If you have any question, demand or queries, please do not hesitate to contact us.

## PIN and CLIPS



### PIN and CLIPS OF CLEVISES

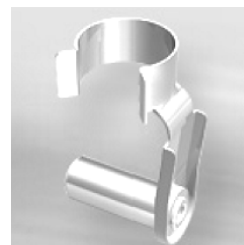
For a quotation, please look at below types and select the part number(s) you require.

Material: PIN: 11SMnPb30 CLIPS: CK67

Protective Finish: Zinc plated and yellow, white, black passivated. (Standard application)

You can look at technical pages for further information. See; Technical Pages.

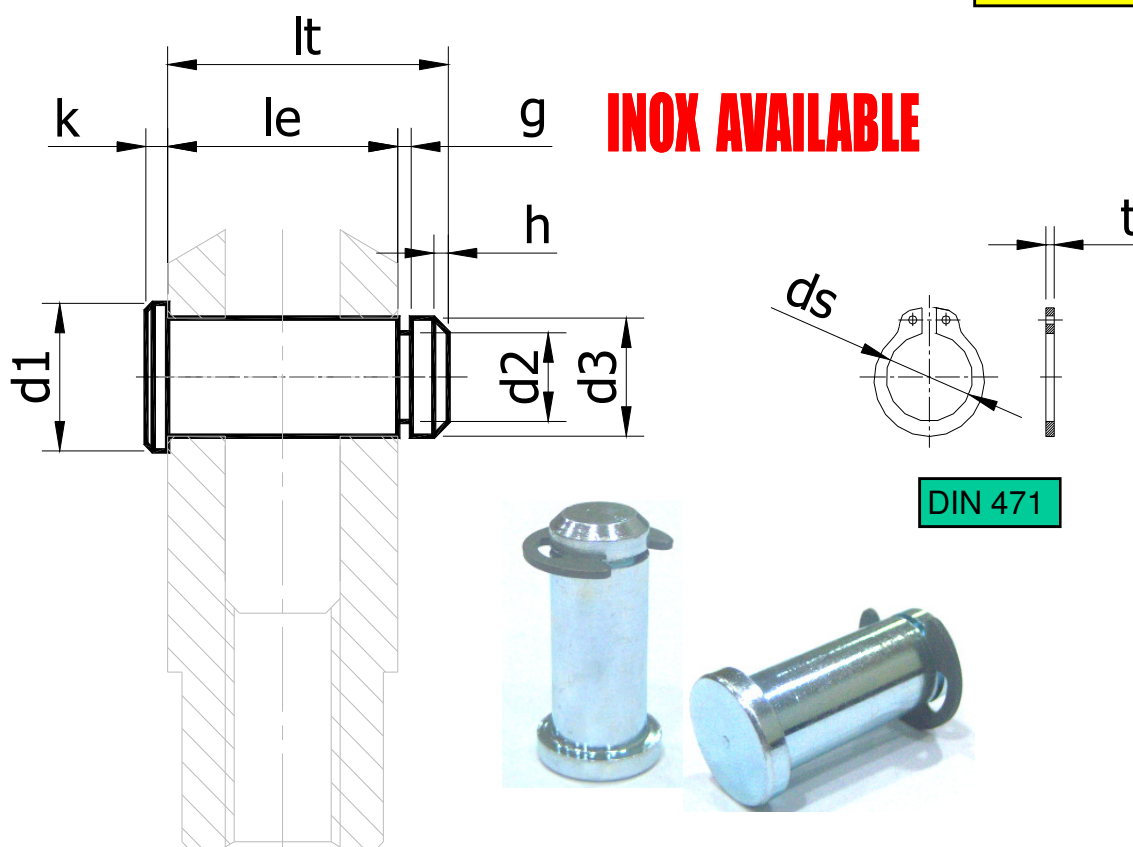
CLEVISES	CODE	d h1	l	w	le	tl	KG/PCS
TO1	TOC 1	4	9	11,0	15,0	18,5	0,0016
TO2	TOC 2	4	9	11,0	22,0	26,0	0,0020
TO3	TOC 3	5	12	13,5	19,0	23,0	0,0027
TO4	TOC 4	5	12	13,5	29,0	33,0	0,0029
TO5	TOC 5	6	14	16,0	23,0	28,0	0,0046
TO6	TOC 6	6	14	16,0	35,0	40,0	0,0050
TO7	TOC 7	8	19	21,5	31,0	37,0	0,0104
TO8	TOC 8	8	19	21,5	47,0	52,0	0,0115
TO9	TOC 9	10	23	26,0	39,0	45,0	0,0190
TO10	TOC 10	10	23	26,0	59,0	65,0	0,0210
TO11	TOC 11	12	28	31,0	47,0	53,0	0,0340
TO12	TOC 12	12	28	31,0	69,0	78,0	0,0345
TO13	TOC 13	14	31	34,0	52,0	62,0	0,0450
TO14	TOC 14	14	31	34,0	82,0	91,0	0,0500
TO15	TOC 15	16	36	39	62,0	73,0	0,0700
TO16	TOC 16	16	36	39	92,0	103,0	0,0715
TO17	TOC 17	20	45	50	76,0	88,0	0,1320



**Special orders are acceptable. A technical drawing or a sample would be enough to produce**

If you have any question, demand or queries, please do not hesitate to contact us.

# PIN



## PIN OF CLEAVISES

For a quotation, please look at below types and select the part number(s) you require.

**Material:** 11SMnPb30

**Protective Finish:** Zinc plated and yellow, white, black passivated. (Standard application)

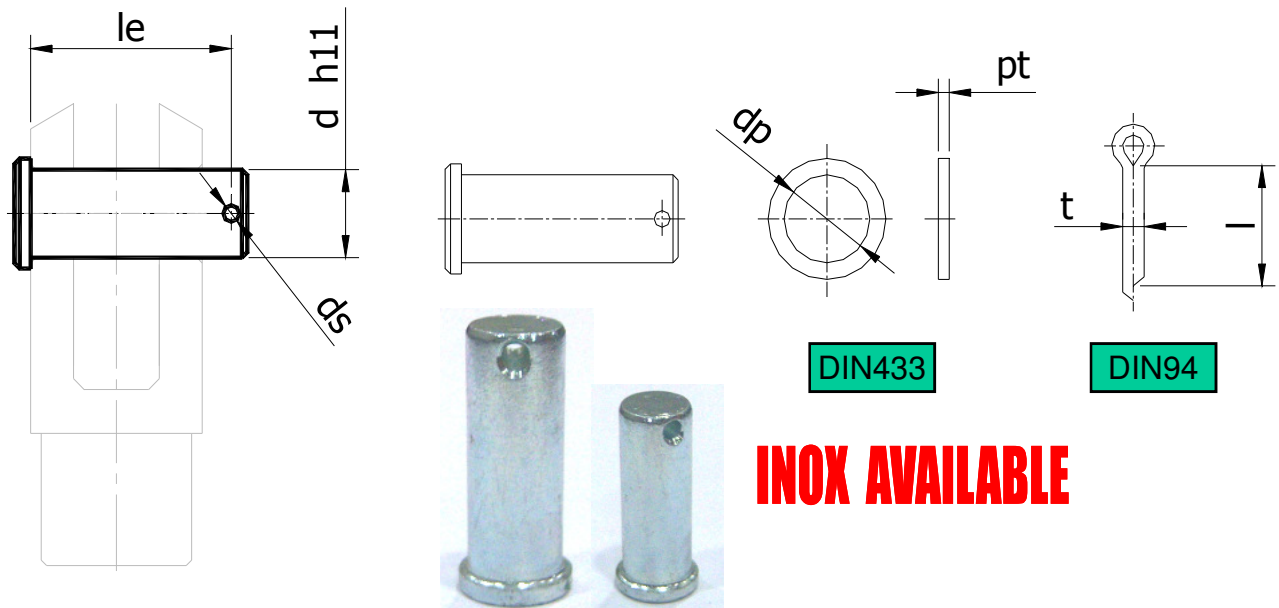
**You can look at technical pages for further information. See; Technical Pages.**

MOUNTING	CODE	DESCRIPTION	d3 h1	d1 h14	d2 h11	lt	le +3 +1	h	g	k	KG/PCS	ds	t
TO1, TO2	TOPB 1	4 X 10 X 8	4	6	3,2	10,0	8	0,5	0,65	1,5	0,0014	3,7	0,4
TO3, TO4	TOPB 2	5 X 12,5 X 10	5	8	4,0	12,5	10	0,5	0,75	1,5	0,0024	4,7	0,6
TO5, TO6	TOPB 3	6 X 15 X 12	6	9	5,0	15,0	12	1,0	0,75	2,0	0,0044	5,6	0,7
TO7, TO8	TOPB 4	8 X 19,5 X 16	8	12	6,0	19,5	16	1,0	0,95	2,0	0,0094	7,4	0,8
TO9, TO10	TOPB 5	10 X 24,5 X 20	10	14	8,0	24,5	20	1,0	1,15	2,0	0,0178	9,3	1,0
TO11, TO12	TOPB 6	12 X 29 X 24	12	16	9,0	29,0	24	1,5	1,15	3,0	0,0336	11,0	1,0
TO13, TO14	TOPB 7	14 X 31 X 27	14	18	11,0	31,0	27	1,5	1,15	3,0	0,0507	12,9	1,0
TO15, TO16	TOPB 8	16 X 38 X 32	16	20	12,0	38,0	32	1,5	1,15	3,5	0,0747	14,7	1,0
TO17	TOPB 9	20 X 46 X 40	20	26	17,5	46,0	40	1,5	1,50	4,0	0,0130	18,5	1,2
TO18	TOPB 10	25 X 56 X 50	25	28	22,0	56,0	50	1,5	1,50	4,0	0,0270	23,2	1,2
TO19	TOPB 11	28 X 62 X 55	28	34	24,0	62,0	55	2,0	2,00	4,0	0,0350	25,9	1,50
TO20	TOPB 12	30 X 68 X 60	30	36	25,0	68,0	60	2,0	2,00	5,0	0,0440	27,9	1,50
TO21	TOPB 13	35 X 78 X 70	35	40	30,0	78,0	70	2,0	2,00	5,0	0,0750	32,2	1,50
TO22	TOPB 14	42 X 93 X 85	42	50	35,0	93,0	85	2,0	2,00	5,0	0,1200	38,5	1,75

**Special orders are acceptable. A technical drawing or a sample would be enough to produce**

If you have any question, demand or queries, please do not hesitate to contact us.

# PIN DIN 1434



## PIN OF CLEVISES

Standard based on DIN 1434

For a quotation, please look at below types and select the part number(s) you require.

Material: 11SMnPb30

Protective Finish: Zinc plated and yellow, white, black passivated. (Standard application)

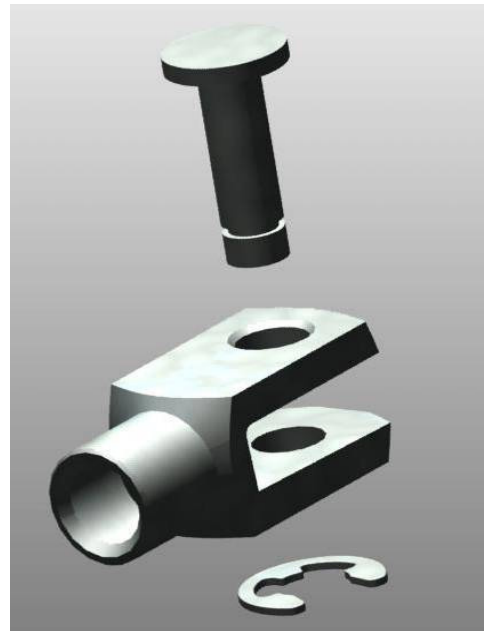
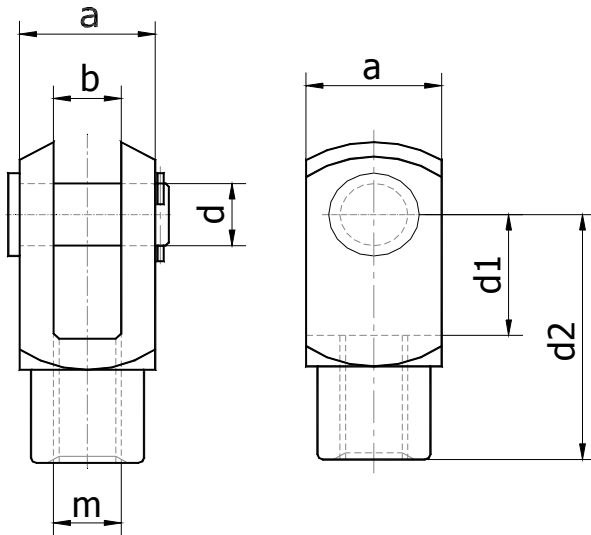
You can look at technical pages for further information. See; Technical Pages.

MOUNTING	CODE	DESCRIPTION	d h1	le	KG/PCS	DIN 433		DIN 94 t X l
						dp	pt	
TO1, TO2	TOPS 1	4 X 12 X 9,2	4	9,2	0,0014	4,3	0,5	1,0 X 10
TO3, TO4	TOPS 2	5 X 16 X 12	5	12,0	0,0024	5,3	1,0	1,6 X 10
TO5, TO6	TOPS 3	6 X 18 X 14,6	6	14,5	0,0044	6,4	1,6	1,6 X 10
TO7, TO8	TOPS 4	8 X 25 X 18,8	8	18,7	0,0094	8,4	1,6	2,0 X 16
TO9, TO10	TOPS 5	10 X 28 X 23,5	10	23,2	0,0178	10,5	1,6	3,2 X 20
TO11, TO12	TOPS 6	12 X 35 X 28,0	12	28,2	0,0336	13	2,0	4,0 X 25
TO13, TO14	TOPS 7	14 X 40 X 32,5	14	31,2	0,0507	15	2,5	4,0 X 25
TO15, TO16	TOPS 8	16 X 45 X 36,5	16	36,2	0,0747	17	2,5	4,0 X 25
TO17	TOPS 9	20 X 54 X 47,0	20	47,0	0,0130	21	3,0	4,0 X 25
TO18	TOPS 10	25 X 67 X 59,0	25	59,0	0,0270	25	4,0	6,3 X 45
TO19	TOPS 11	28 X 72 X 63,5	28	63,5	0,0350	28	4,0	6,3 X 45
TO20	TOPS 12	30 X 75 X 67,0	30	67,0	0,0440	30	4,0	6,3 X 63
TO21	TOPS 13	36 X 87 X 76,0	35	76,0	0,0750	36	5,0	8,0 X 63
TO22	TOPS 14	42 X 104 X 94,0	42	90,0	0,1200	43	5,0	8,0 X 63

**Special orders are acceptable. A technical drawing or a sample would be enough to produce**  
If you have any question, demand or queries, please do not hesitate to contact us.

S.S. CLEVISES

**INOX**



#### CLEVISES

Standard based on DIN 71752 - Metric sizes

**For a quotation, please look at below types and select the part number(s) you require.**

**Material:** 303, 1.4305

**Protective Finish:** Zinc plated and yellow, white or black passivated.

**You can look at technical pages for further information. See; Technical Pages.**

**With metric fine-pitch thread, m=M8x1,25 only add "FP" on the code. TO7FP**



CODE	m 6H	d1	a	b	d2	d H9
TO 063	M4	8	8	4	18	4
TO 083	M6	12	12	6	24	6
TO 103	M8	16	16	8	32	8
TO 203	M10	20	20	10	40	10
TO 223	M14	28	28	14	56	14
TO 243	M14x1,5	28	28	14	56	14

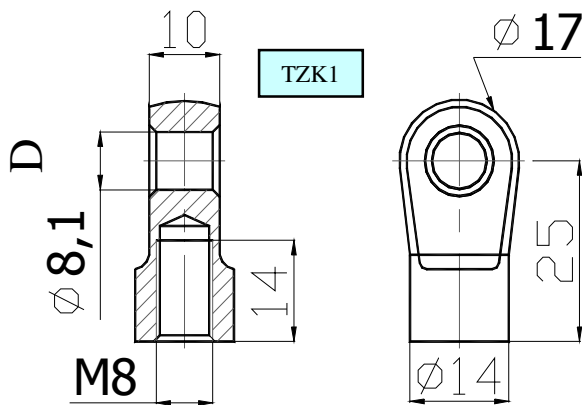


**Special orders are acceptable. A technical drawing or a sample would be enough to produce**

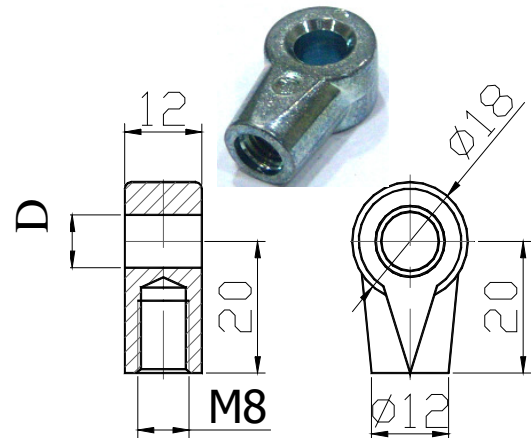
If you have any question, demand or queries, please do not hesitate to contact us.



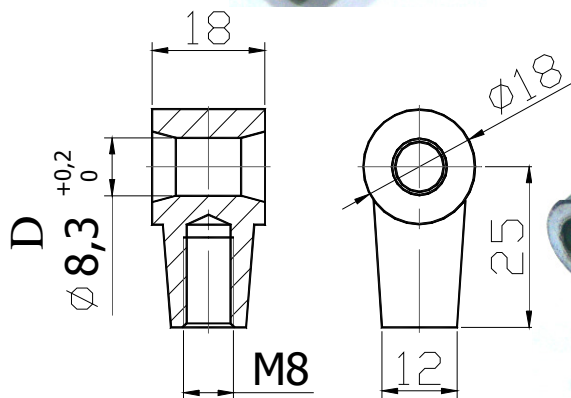
## ZAMAC PRODUCTS



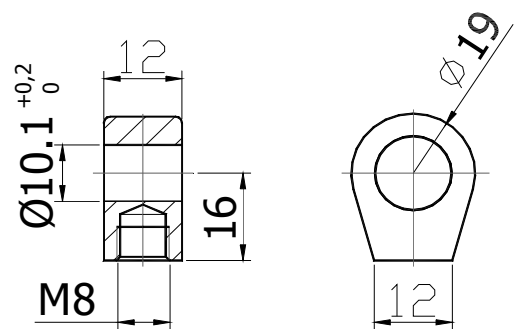
TZK1



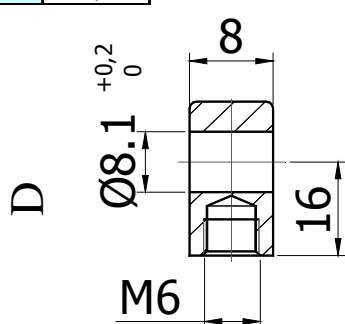
CODE	D
TZK2	Ø8,3
TZK3	Ø10,1



CODE	D
TZK4	Ø8,3
TZK5	Ø10,2



CODE	D
TZK6	Ø10,1
TZK7	Ø12,1
TZK10	Ø8,1



CODE	D
TZK8	Ø8,1
TZK9	Ø10,1

**INOX AVAILABLE**



### ZAMAC PRODUCTS

For a quotation, please look at types and select the code (s) you require.

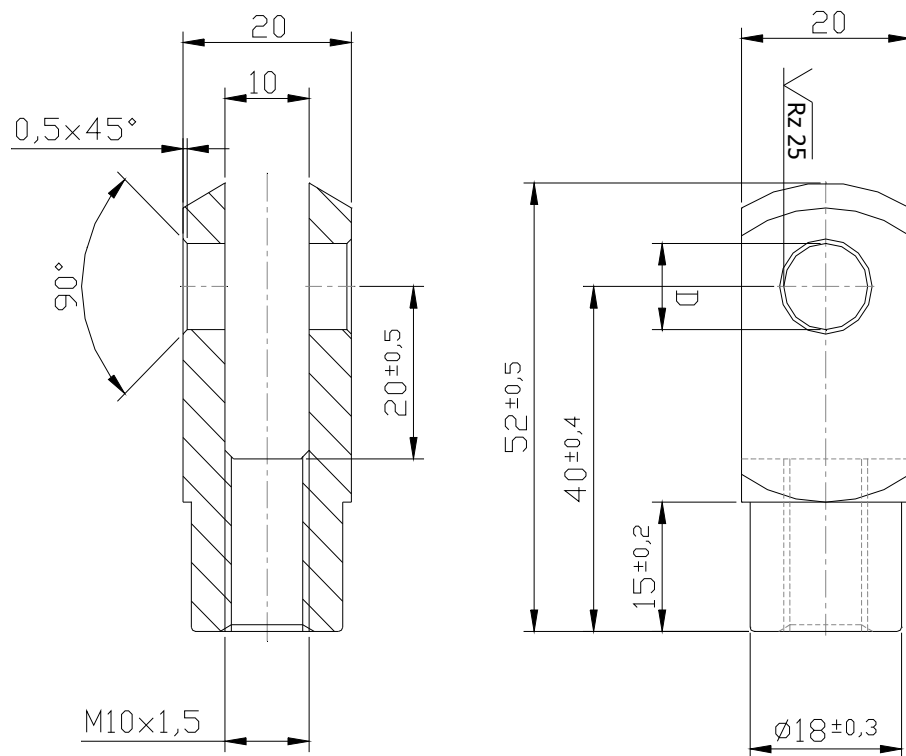
Material: Zamac5

Protective Finish: Zinc plated and yellow, white or black passivated.

You can look at technical pages for further information. See; Technical Pages.

**Special orders are acceptable. A technical drawing or a sample would be enough to produce**

If you have any question, demand or queries, please do not hesitate to contact us.



CODE	D
TZKC-01	Ø8,2
TZKC-02	Ø10,2
TZKC-03	Ø12,2

**ZAMAC PRODUCTS**

For a quotation, please look at types and select the code (s) you require.

**Material:** Zamac

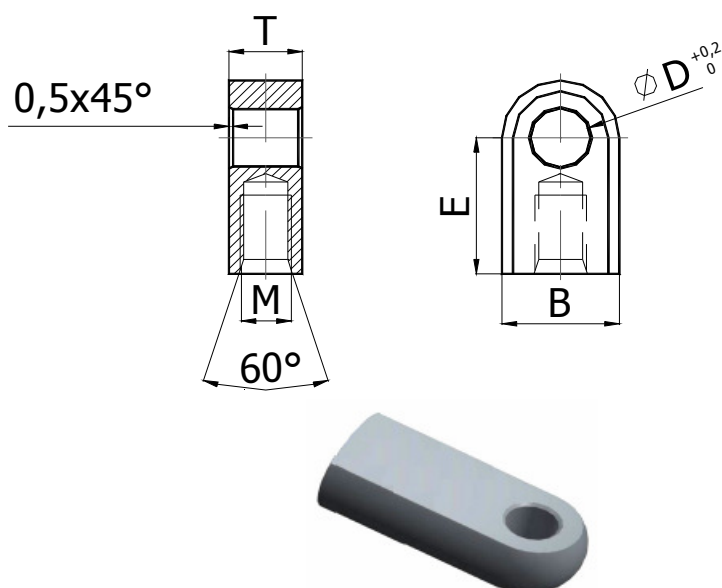
**Protective Finish:** Zinc plated and yellow, white or black passivated.

You can look at technical pages for further information. See; Technical Pages.

**Special orders are acceptable. A technical drawing or a sample would be enough to produce**

If you have any question, demand or queries, please do not hesitate to contact us.

## EYE PRODUCTS



CODE	D (+0,2)	T (+0,2)	M	E	B
TDN016	6,1	10	M8	16	16
TDN068	6,1	10	M8	18	16
TDN728	7,28	10	M8	20	16
TDN16	8,1	12	M8	16	16
TDN018	8,1	10	M8	16	16
TDN817	8,1	10	M8	17	16
TDN198	8,1	10	M6	19	16
TDN20	8,1	12	M10	20	16
TDN829	8,1	10	M8	20	16
TDN22	8,1	12	M10	22	16
TDN190	10,1	10	M6	19	16

### EYE PRODUCTS

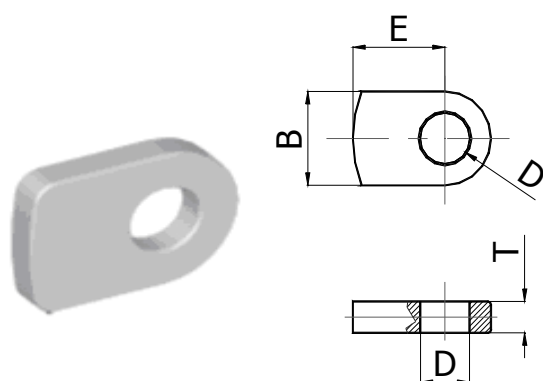
For a quotation, please look at below types and select the part number(s) you require.

Material: 11S Mn Pb 30K (SAE 12L14),

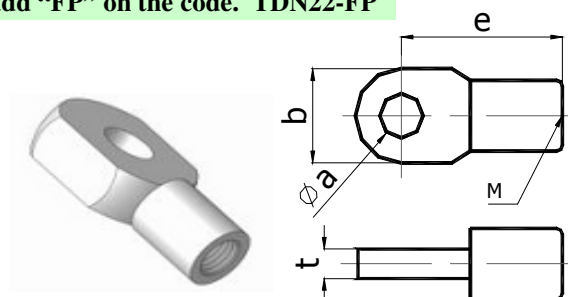
Protective Finish: Zinc plated and yellow, white or black passivated.

You can look at technical pages for further information. See; Technical Pages.

With metric fine-pitch thread, m=M8x1,25 only add "FP" on the code. TDN22-FP



CODE	D (+0,2)	E	B	T
TDN6	6,1	13	13	3
TDN65	6,1	15	15	5
TDN66	6,1	16,5	15	3
TDN63	8,1	13	15	3
TDN8	8,1	15	15	5
TDN81	8,1	16,5	15	5
TDN104	10,1	15	15	5

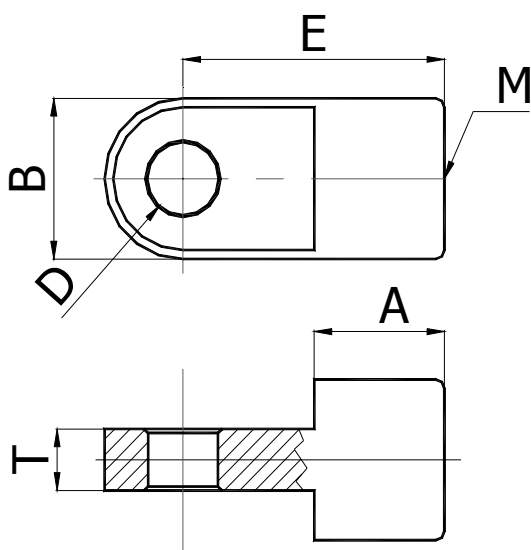


CODE	a	M	e	b	t
TDN824	6,2	M6	15	13	3
TDN603	6,2	M6	20	15	3
TDN663	6,2	M6	22	15	3
TDN123	6,2	M6	22	15	5
TDN628	6,2	M8	22	15	10
TDN082	8,2	M6	22	15	3
TDN828	8,2	M6	22	15	5
TDN822	8,2	M8	22	15	5
TDN622	8,2	M6	25	15	5
TDN128	8,2	M8	25	15	5
TDN835	8,2	M8	30	15	5
TDN623	10,2	M6	25	15	5
TDN125	10,2	M8	25	15	5
TDN836	10,2	M8	30	15	5

**Special orders are acceptable. A technical drawing or a sample would be enough to produce**

If you have any question, demand or queries, please do not hesitate to contact us.

## EYE PRODUCTS



CODE	D (+0,2)	E	M	T	B	A
TDN658	6,1	16	M5		6	10
TDN620	6,1	20	M6		3	10
TDN10	8,1	22	M8		5	15
TDN105	8,1	22	M8		10	15
TDN106	8,1	22	M6		5	15
TDN823	8,1	25	M8		3	15
TDN825	8,1	25	M8		5	15
TDN821	8,1	25	M8		8	15
TDN103	8,1	30	M10		10	18
TDN831	8,1	35	M8		10	20
TDN1351	8,1	35	M10		10	18
TDN1352	10,1	25	M8		10	18
TDN135	10,1	35	M10		10	20
TDN1358	10,1	35	M8		10	20
TDN518	8,1	18	M6		5	15
TDN520	8,1	20	M6		5	15
TDN525	8,1	25	M6		5	15
TDN530	8,1	30	M6		5	15
TDN510	8,1	18	M8		10	18
TDN521	8,1	20	M8		10	18
TDN524	8,1	22	M8		10	18
TDN528	8,1	25	M8		10	18
TDN532	8,1	30	M8		10	18
TDN522	10,1	22	M10		12	20
TDN531	10,1	30	M10		12	20
TDN535	10,1	35	M10		12	20

### EYE PRODUCTS

For a quotation, please look at below types and select the part number(s) you require.

**Material:** 11S Mn Pb 30K (SAE 12L14),

**Protective Finish:** Zinc plated and yellow, white or black passivated.

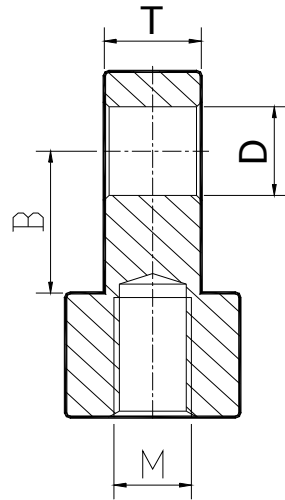
**You can look at technical pages for further information. See; Technical Pages.**

**With metric fine-pitch thread, m=M8x1,25 only add "FP" on the code. TDN10-FP**

**Special orders are acceptable. A technical drawing or a sample would be enough to produce**

If you have any question, demand or queries, please do not hesitate to contact us.

**S.S. EYE PRODUCTS**



CODE	M	B	C	T	E	D
TDNP 263	M4	7	8	4	12	4,1
TDNP 283	M6	9	10	6	16	6,1
TDNP 303	M6	12	14	5	26	6,1
TDNP 323	M6	12	14	5	26	8,1
TDNP 343	M8	13	15	10	19	8,1
TDNP 363	M8	16	18	10	30	8,1
TDNP 383	M8	16	18	10	30	10,1
TDNP 403	M10	16	18	10	30	8,1
TDNP 503	M14	17	22	14	38	14,1
TDNP 803	M14	17	22	14	27	14,1

**TDNP263-FP**



**Special orders are acceptable. A technical drawing or a sample would be enough to produce**  
If you have any question, demand or queries, please do not hesitate to contact us.

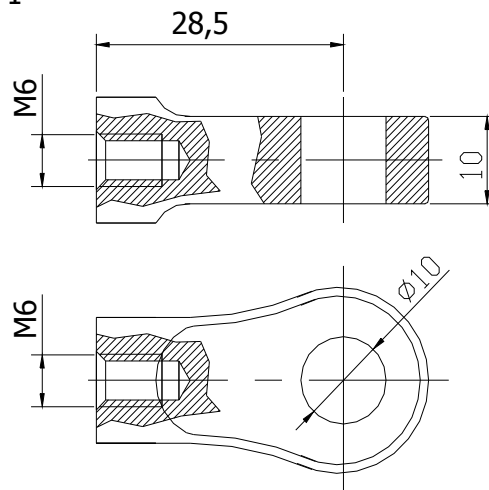
## PLASTIC PARTS

PLSE-1

Material: PA66  
Colour: BLACK



PLSE-1



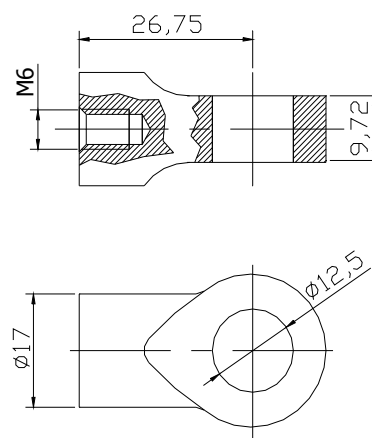
PLSE-1-A	Ø6.2
PLSE-1-B	Ø8.3
PLSE-1-C	Ø10.2

PLSE-2

Material: PA66  
Colour: BLACK



PLSE-2



### PLASTIC PARTS

For a quotation, please look at types and select the code (s) you require.  
All the colours can be applied on the products. See; Technical Pages.

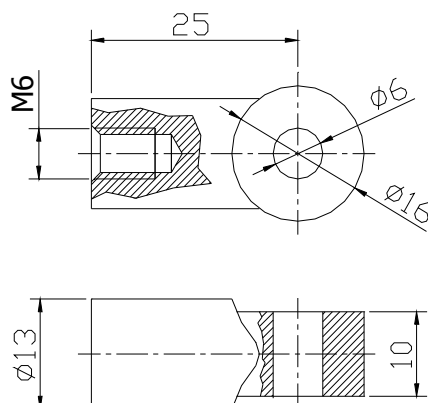
**Special orders are acceptable. A technical drawing or a sample would be enough to produce**  
If you have any question, demand or queries, please do not hesitate to contact us.



## PLASTIC PARTS

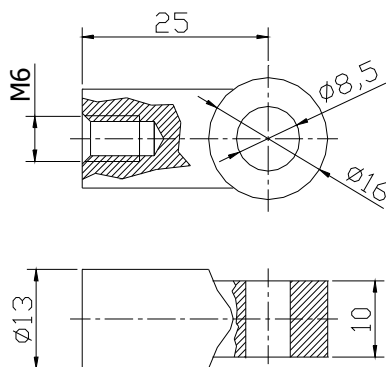
PLS-15

Material: PA66  
Colour: BLACK



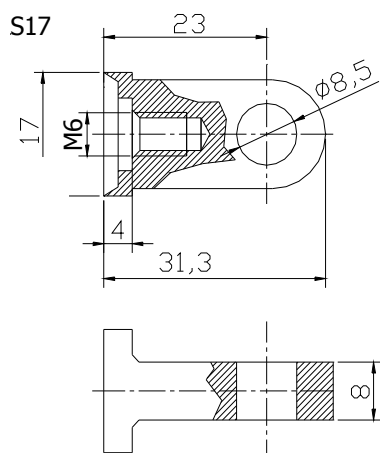
PLS-16

Material: PA66  
Colour: BLACK



PLS-17

Material: PA66  
Colour: BLACK



### PLASTIC PARTS

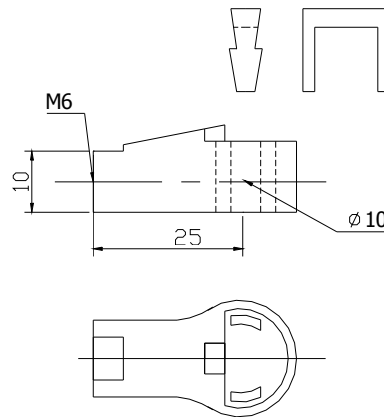
For a quotation, please look at types and select the code (s) you require.  
All the colours can be applied on the products. See; Technical Pages.

**Special orders are acceptable. A technical drawing or a sample would be enough to produce**  
If you have any question, demand or queries, please do not hesitate to contact us.

## PLASTIC PARTS

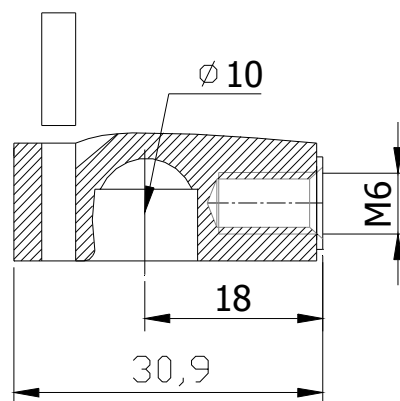
PLS-19

Material: PA66  
Colour: BLACK



PLS-20

Material: PA66  
Colour: BLACK



### PLASTIC PARTS

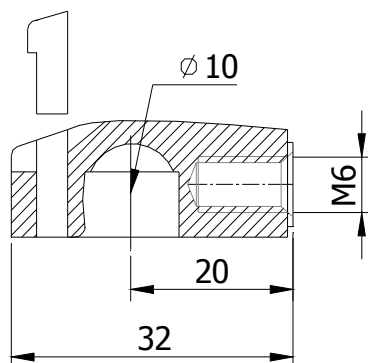
For a quotation, please look at types and select the code (s) you require.  
All the colours can be applied on the products. See; Technical Pages.

**Special orders are acceptable. A technical drawing or a sample would be enough to produce**  
If you have any question, demand or queries, please do not hesitate to contact us.

## PLASTIC PARTS

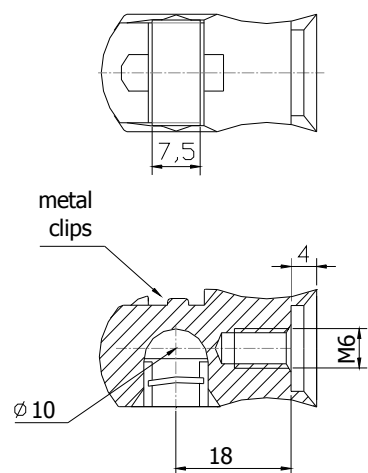
PLS-21

Material: PA66  
Colour: BLACK



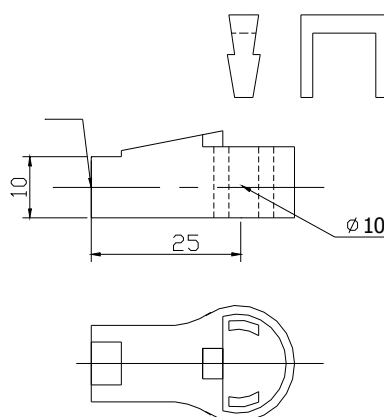
PLS-22

Material: PA66  
Colour: BLACK



PLS-23

Material: PA66  
Colour: BLACK



### PLASTIC PARTS

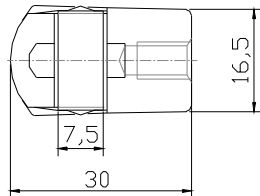
For a quotation, please look at types and select the code (s) you require.  
All the colours can be applied on the products. See; Technical Pages.

**Special orders are acceptable. A technical drawing or a sample would be enough to produce**  
If you have any question, demand or queries, please do not hesitate to contact us.

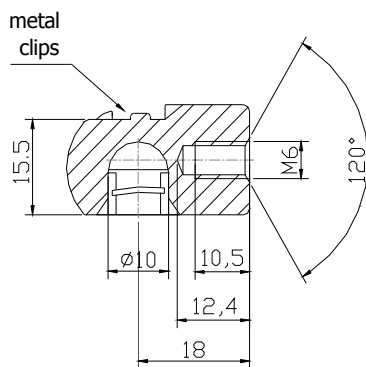
## PLASTIC PARTS



PLS 4



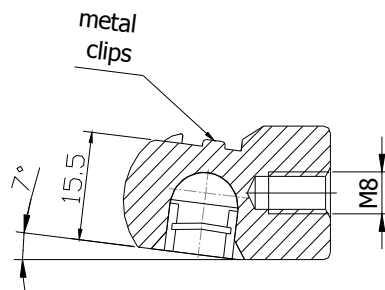
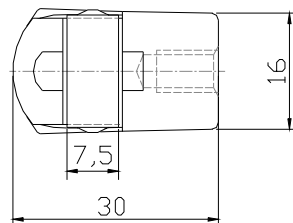
Material: PA66 GF30  
Colour: BLACK



PLA-1-M8



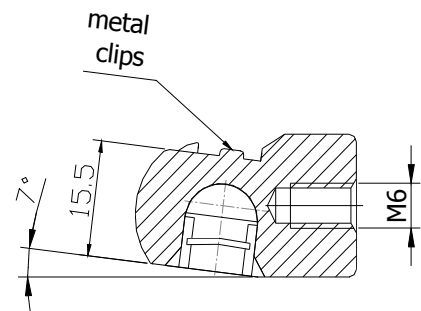
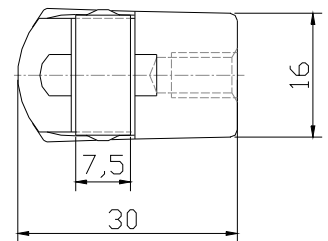
Material: PA66 GF30  
Colour: BLACK



PLA-1

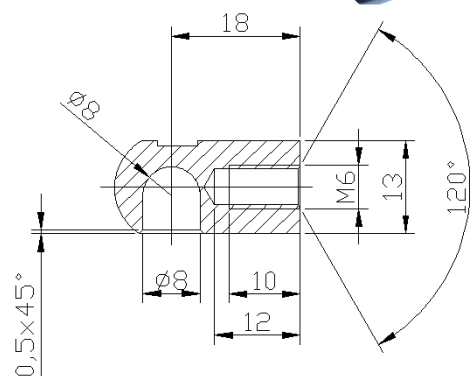
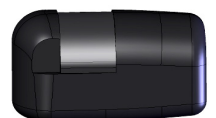


Material: PA66 GF30  
Colour: BLACK



PLS 4 – 8

Material: PA66 GF30  
Colour: BLACK



### PLASTIC PARTS

For a quotation, please look at types and select the code (s) you require.  
All the colours can be applied on the products. See; Technical Pages.

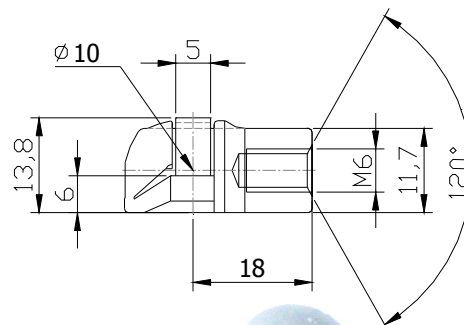
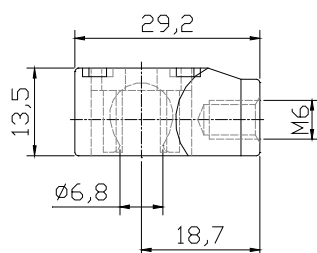
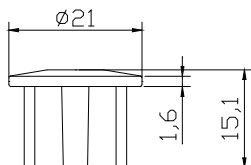
**Special orders are acceptable. A technical drawing or a sample would be enough to produce**  
If you have any question, demand or queries, please do not hesitate to contact us.

## PLASTIC PARTS



PLS 1

Material: PA66  
Colour: BLACK



PLS 2

Material: PA66 GF30  
Colour: GREY



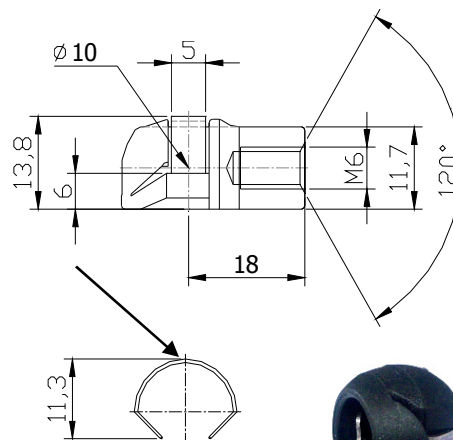
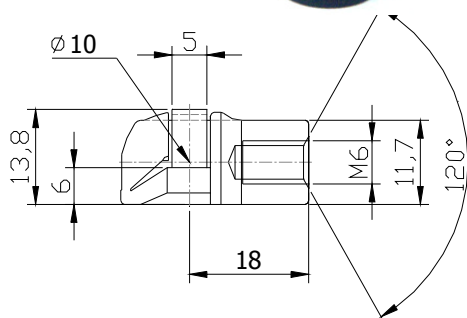
PLS 5

Material: PA66 GF30  
Colour: BLACK

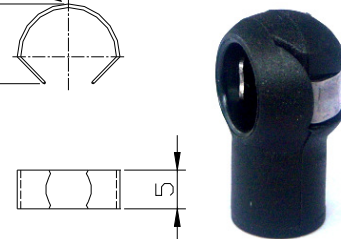


PLSP 5

Stainless Steel - 301



# INOX



## PLASTIC PARTS

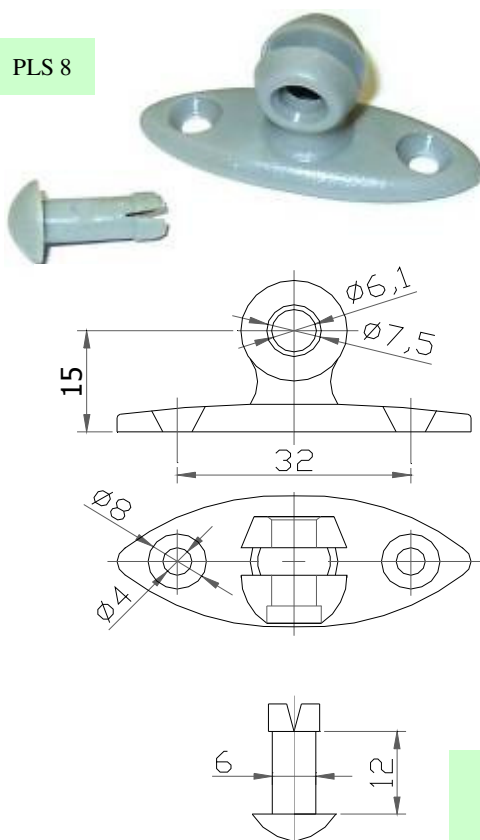
For a quotation, please look at types and select the code (s) you require.  
All the colours can be applied on the products. See; Technical Pages.

Material: PA66 GF30  
Colour: BLACK

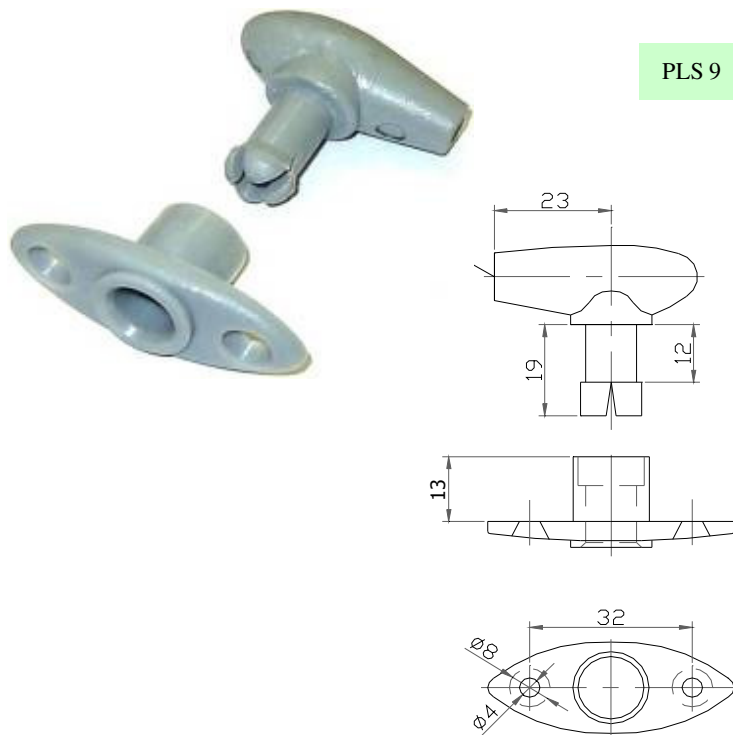
**Special orders are acceptable. A technical drawing or a sample would be enough to produce**  
If you have any question, demand or queries, please do not hesitate to contact us.

## KITCHEN PLASTICS and BRACKET PARTS

PLS 8



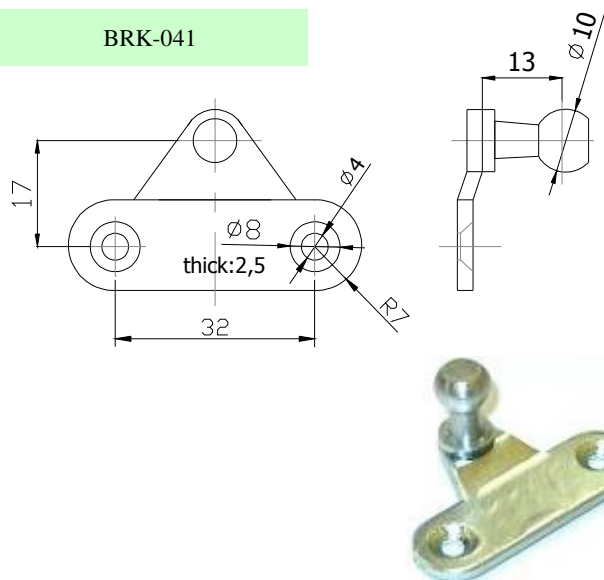
PLS 9



### PLASTIC PARTS

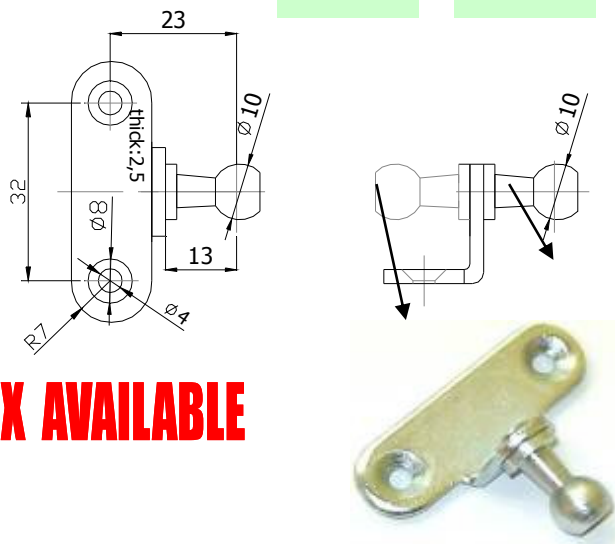
For a quotation, please look at types and select the code (s) you require.  
All the colours can be applied on the products. See; Technical Pages.

BRK-041



BRK-042-L

BRK-042-R



**INOX AVAILABLE**

### BRACKET PRODUCTS

For a quotation, please look at types and select the code (s) you require.

**Material:** Steel Sheet or Stainless Steel

**Protective Finish:** Zinc plated and yellow, white or black passivated.

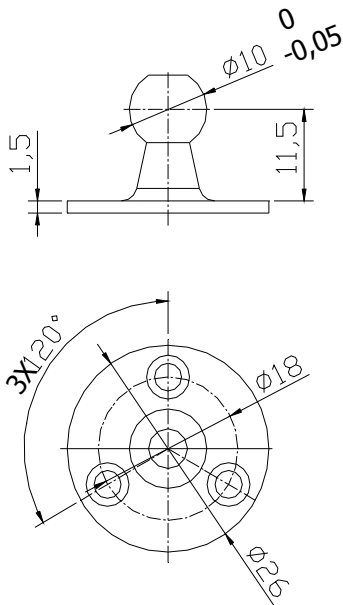
You can look at technical pages for further information. See; Technical Pages.

**Special orders are acceptable. A technical drawing or a sample would be enough to produce**  
If you have any question, demand or queries, please do not hesitate to contact us.



## KITCHEN BRACKET PARTS

BRK-043

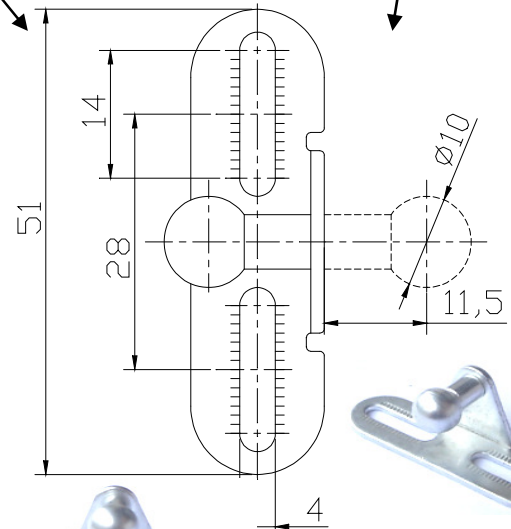
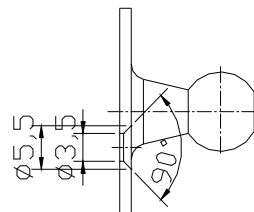


**INOX AVAILABLE**



BRK - 044 - L

BRK - 044 - R

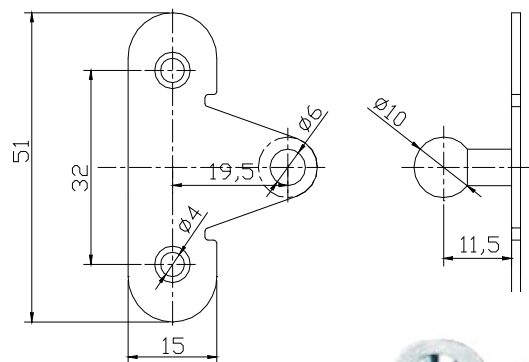
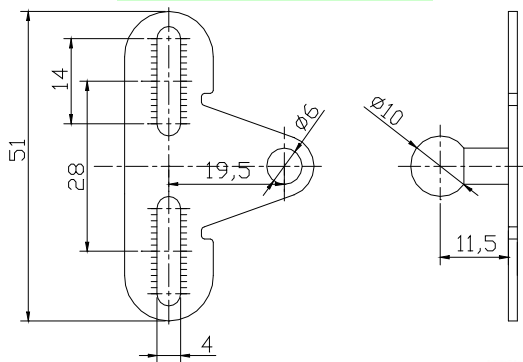


**INOX AVAILABLE**



BRK-045

BRK-046



**INOX AVAILABLE**



### BRACKET PRODUCTS

For a quotation, please look at types and select the code (s) you require.

**Material:** Steel Sheet or Stainless Steel

**Protective Finish:** Zinc plated and yellow, white or black passivated.

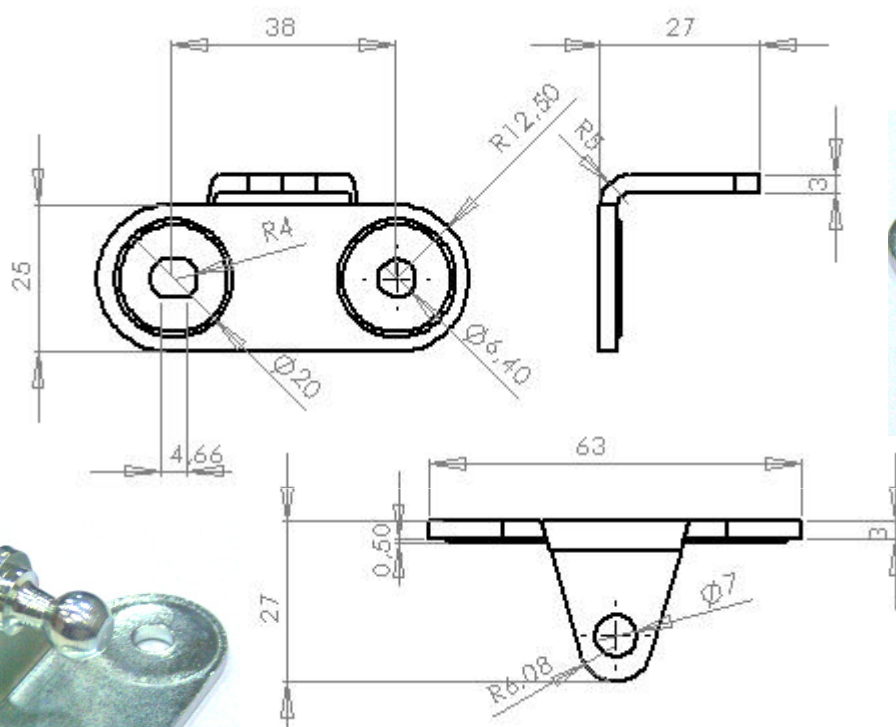
You can look at technical pages for further information. See; Technical Pages.

**Special orders are acceptable. A technical drawing or a sample would be enough to produce**  
If you have any question, demand or queries, please do not hesitate to contact us.

## BRACKET PRODUCTS

BRK-579

**INOX AVAILABLE**



### BRACKET PRODUCTS

For a quotation, please look at types and select the code (s) you require.

**Material:** Steel Sheet or Stainless Steel

**Protective Finish:** Zinc plated and yellow, white or black passivated.

You can look at technical pages for further information. See; Technical Pages.

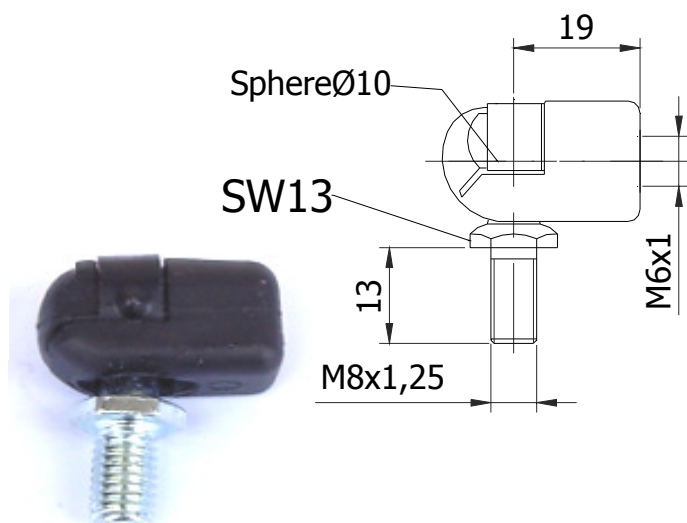
**Special orders are acceptable. A technical drawing or a sample would be enough to produce**  
If you have any question, demand or queries, please do not hesitate to contact us.

## SPECIAL PRODUCTS

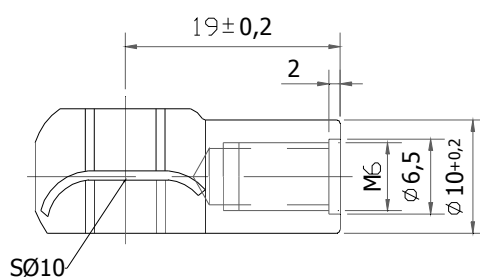
TRND



PLS4 + TOR3-13



RD10-Y



For a quotation, please look at below types and select the part number(s) you require.

Material: 11S Mn Pb 30K (SAE 12L14), Clips: CK67

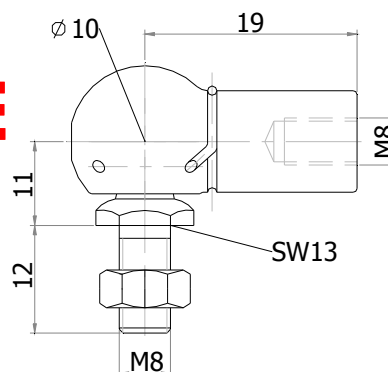
Protective Finish: Zinc plated and yellow, white or black passivated.

You can look at technical pages for further information. See; Technical Pages.

HTS2-19-M8



**INOX AVAILABLE**

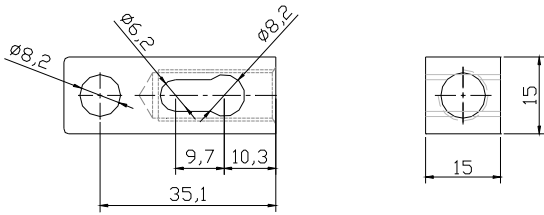


RD2-19-M8 + TOR3-13

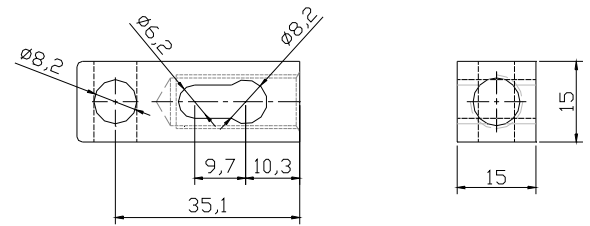
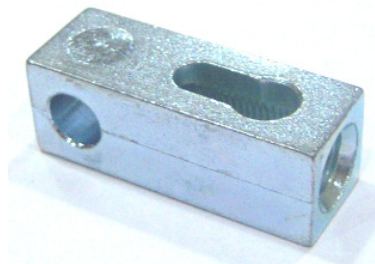
**Special orders are acceptable. A technical drawing or a sample would be enough to produce**

If you have any question, demand or queries, please do not hesitate to contact us.

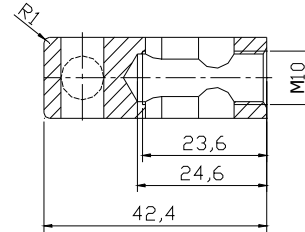
## BLOCKABLE END FITTINGS



YBLK - 01

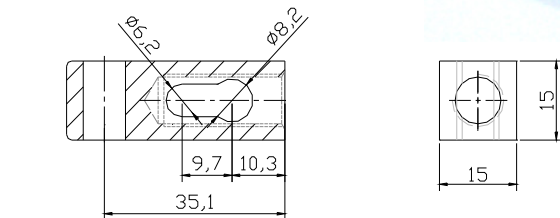
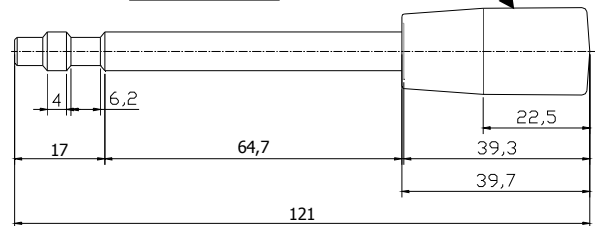


YBLK - 03



YBLK - 02

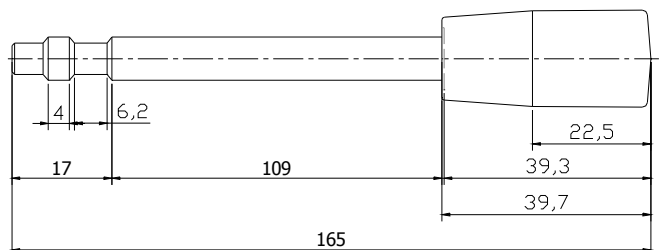
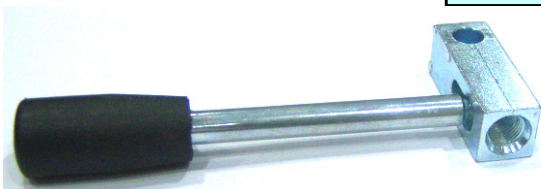
PLS-60



YBLK - 04



YBLK - 02L



### BLOCKABLE END FITTINGS

For a quotation, please look at types and select the code(s) you require.

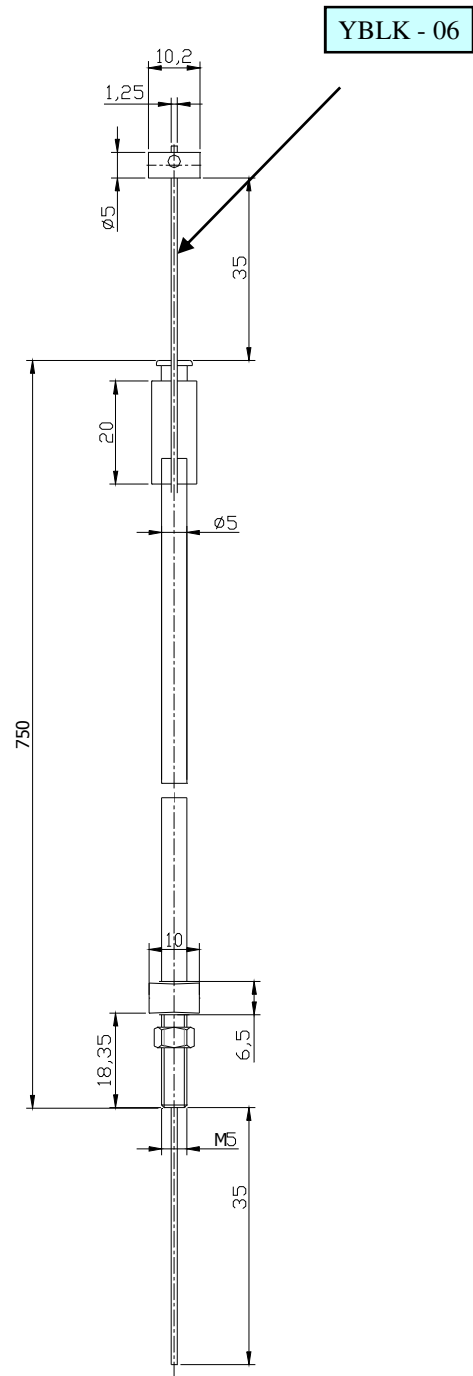
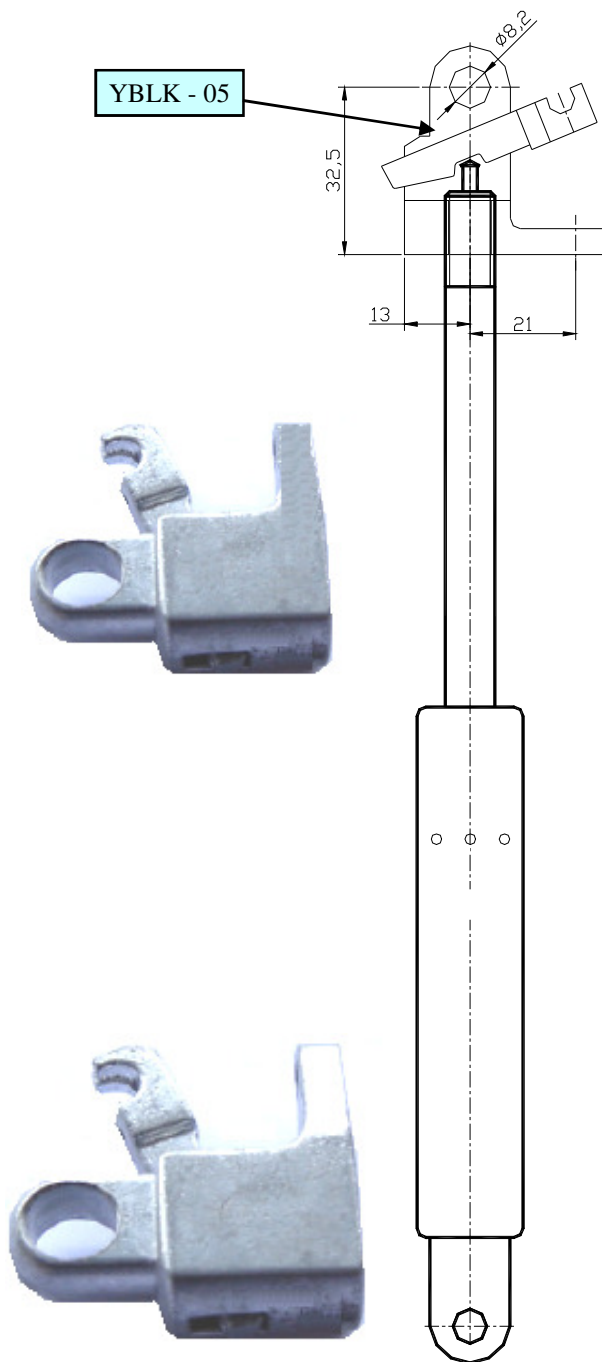
**Material:** Body: Zamac, Shaft: 11S Mn Pb 30K (SAE 12L14), Handle: PA66 GF30

**Protective Finish:** Shaft, Body: Zinc plated and yellow, white or black passivated.

**You can look at technical pages for further information. See; Technical Pages.**

**Special orders are acceptable. A technical drawing or a sample would be enough to produce**  
If you have any question, demand or queries, please do not hesitate to contact us.

## BLOCKABLE END FITTINGS



### BLOCKABLE END FITTINGS

**For a quotation, please look at types and select the code(s) you require.**

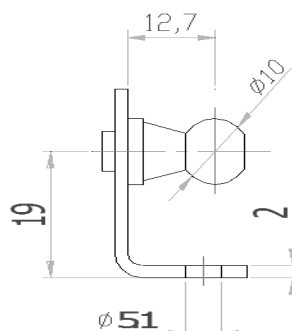
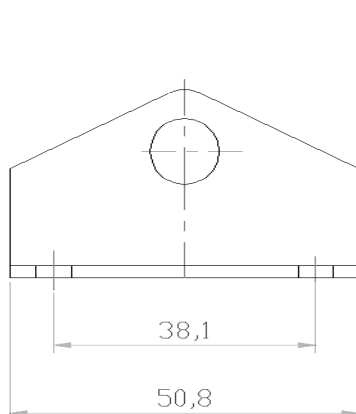
**Material:** YBLK05-Body: Zamac, Shaft: Zamac--YBLK06-wire, steel

**Protective Finish:** Shaft, Body: Zinc plated and yellow, white or black passivated.

**You can look at technical pages for further information. See; Technical Pages.**

**Special orders are acceptable. A technical drawing or a sample would be enough to produce**  
If you have any question, demand or queries, please do not hesitate to contact us.

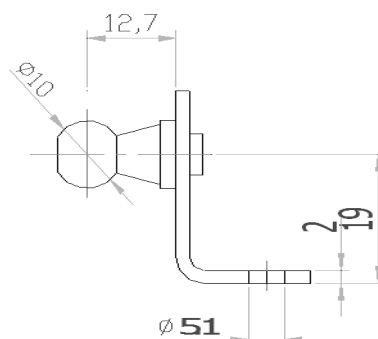
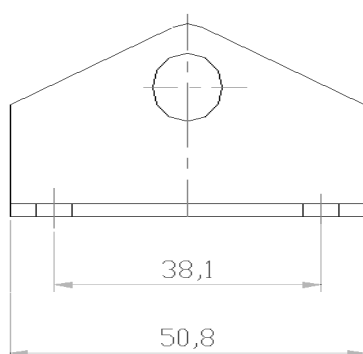
## BRACKET PRODUCTS



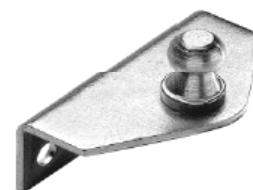
BRK-402R



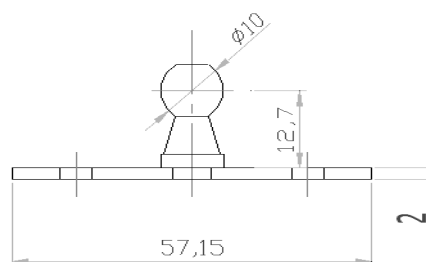
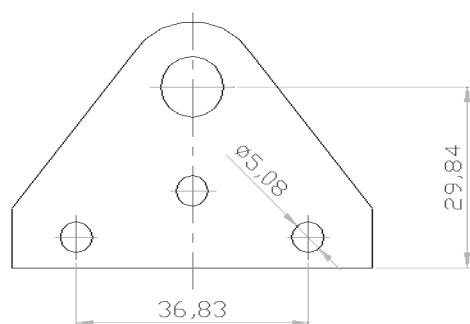
**INOX AVAILABLE**



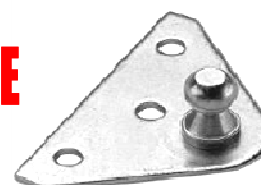
BRK-402L



**INOX AVAILABLE**



BRK-202



**INOX AVAILABLE**

### BRACKET PRODUCTS

For a quotation, please look at types and select the code (s) you require.

**Material:** Steel Sheet or Stainless Steel

**Protective Finish:** Zinc plated and yellow, white or black passivated.

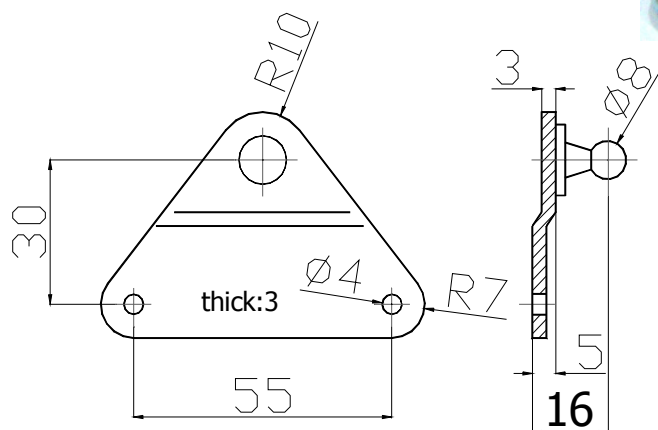
You can look at technical pages for further information. See; Technical Pages.

**Special orders are acceptable. A technical drawing or a sample would be enough to produce**  
If you have any question, demand or queries, please do not hesitate to contact us.

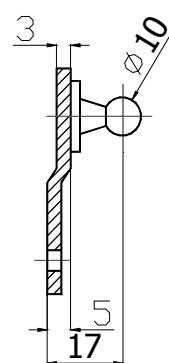
## BRACKET PRODUCTS



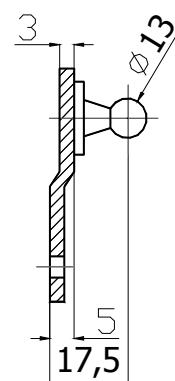
**INOX AVAILABLE**



BRK-021

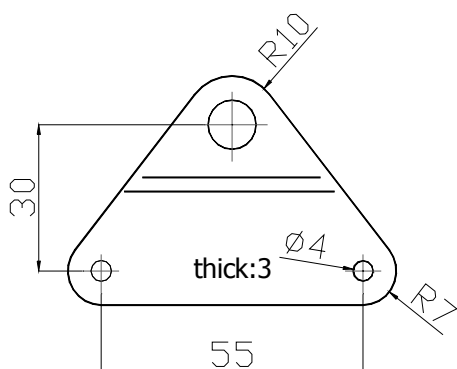


BRK-022

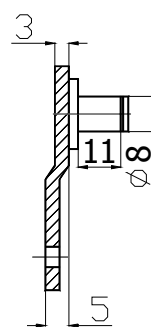


BRK-023

ALL THE BRACKETS ARE PRODUCED WITH THE SAME MOULD BUT WITH DIFFERENT FITTINGS

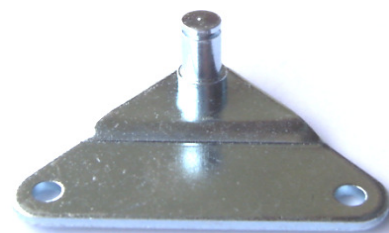


BRK-024



BRK-025

**INOX AVAILABLE**



### BRACKET PRODUCTS

For a quotation, please look at types and select the code (s) you require.

**Material:** Steel Sheet or Stainless Steel

**Protective Finish:** Zinc plated and yellow, white or black passivated.

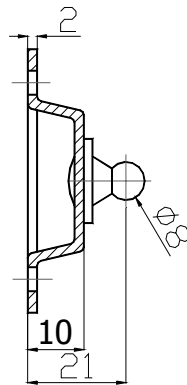
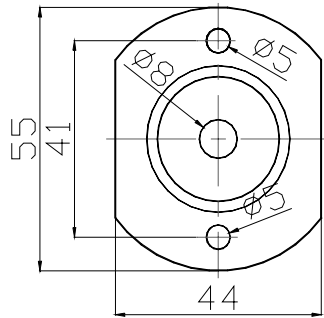
You can look at technical pages for further information. See; Technical Pages.

**Special orders are acceptable. A technical drawing or a sample would be enough to produce**

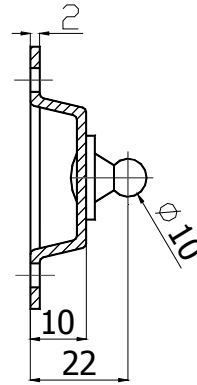
If you have any question, demand or queries, please do not hesitate to contact us.



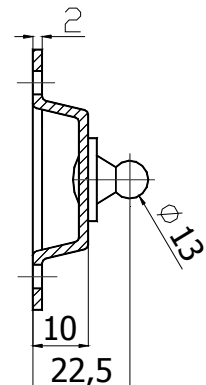
## BRACKET PRODUCTS



BRK-011



BRK-012

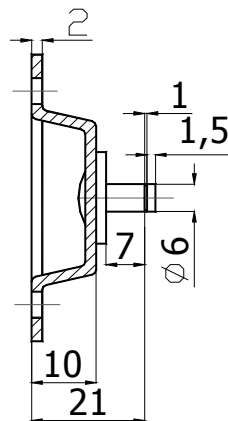
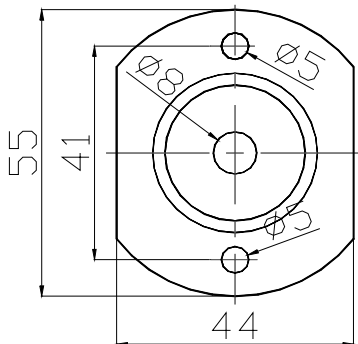


BRK-013

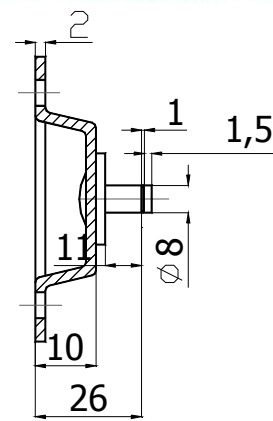
ALL THE BRACKETS ARE PRODUCED WITH THE SAME MOULD BUT WITH DIFFERENT FITTINGS



**INOX AVAILABLE**



BRK-014



BRK-015

### BRACKET PRODUCTS

For a quotation, please look at types and select the code (s) you require.

**Material:** Steel Sheet or Stainless Steel

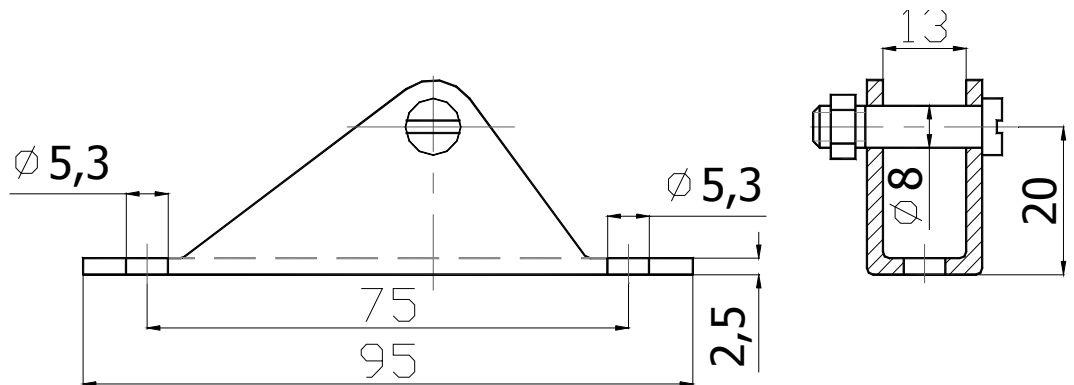
**Protective Finish:** Zinc plated and yellow, white or black passivated.

You can look at technical pages for further information. See; Technical Pages.

**Special orders are acceptable. A technical drawing or a sample would be enough to produce**  
If you have any question, demand or queries, please do not hesitate to contact us.

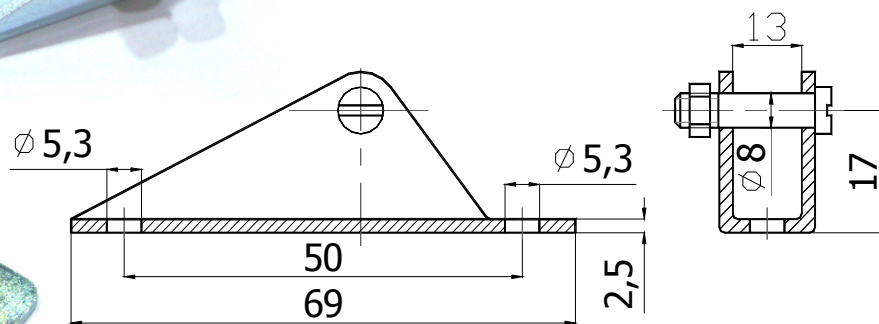
## BRACKET PRODUCTS

BRK-031



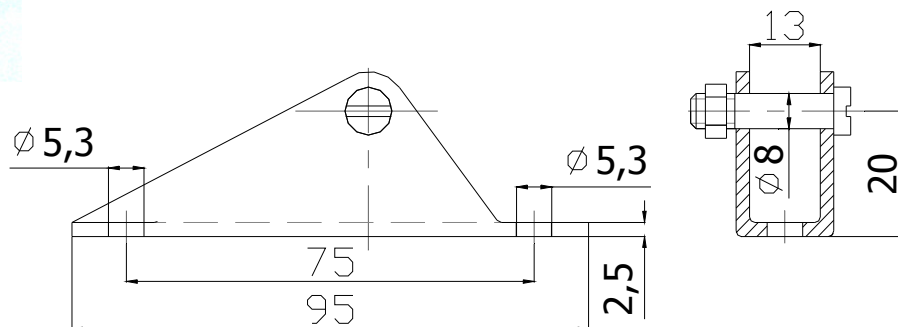
**INOX AVAILABLE**

BRK-032



**INOX AVAILABLE**

BRK-031L



### BRACKET PRODUCTS

For a quotation, please look at types and select the code (s) you require.

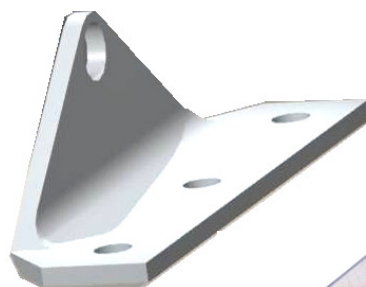
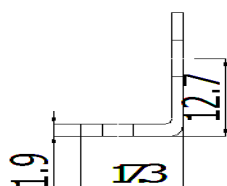
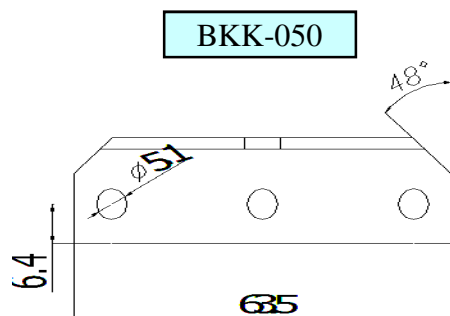
**Material:** Steel Sheet or Stainless Steel

**Protective Finish:** Zinc plated and yellow, white or black passivated.

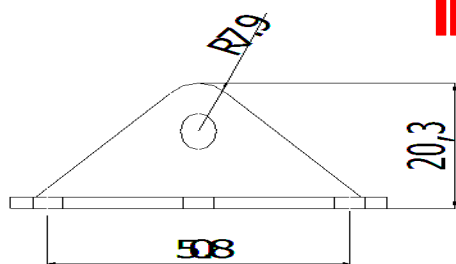
You can look at technical pages for further information. See; Technical Pages.

**Special orders are acceptable. A technical drawing or a sample would be enough to produce**  
If you have any question, demand or queries, please do not hesitate to contact us.

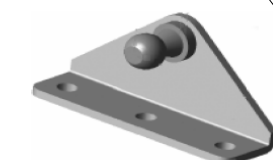
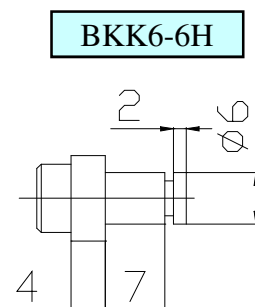
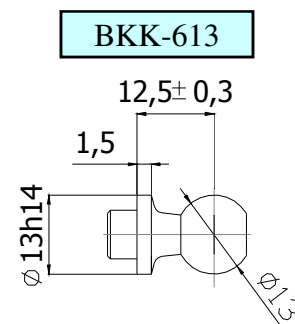
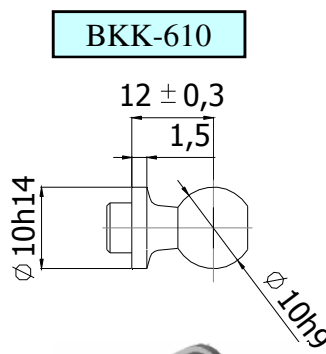
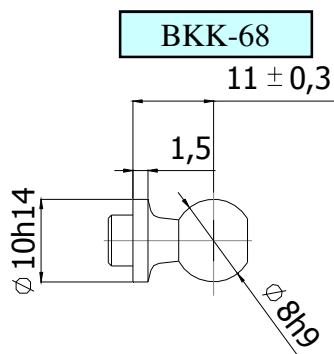
## BRACKET PRODUCTS



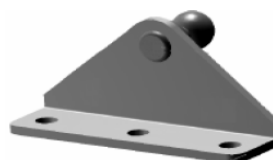
**INOX AVAILABLE**



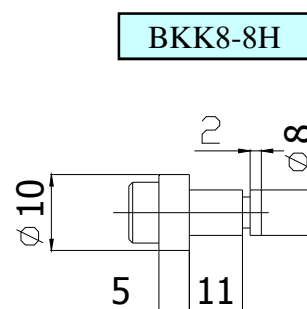
BRACKET CODE	S. CODE	F.CODE
BRK - 051	BRK-050	BKK-68
BRK - 052	BRK-050	BKK-610
BRK - 053	BRK-050	BKK-613
BRK - 054	BRK-050	BKK6-6H
BRK - 055	BRK-050	BKK8-8H



left side



right side



## BRACKET PRODUCTS

For a quotation, please look at types and select the code (s) you require.

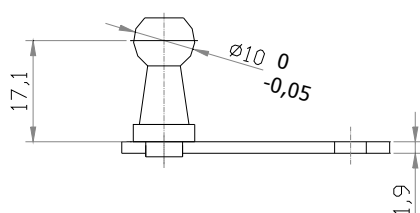
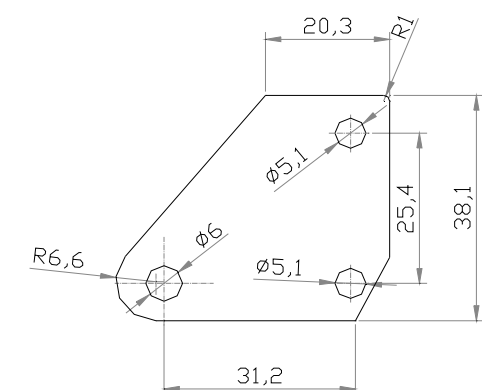
**Material:** Steel Sheet or Stainless Steel

**Protective Finish:** Zinc plated and yellow, white or black passivated.

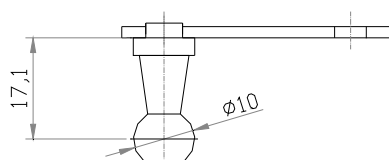
You can look at technical pages for further information. See; Technical Pages.

**Special orders are acceptable. A technical drawing or a sample would be enough to produce**  
If you have any question, demand or queries, please do not hesitate to contact us.

## BRACKET PRODUCTS



BRK-060U

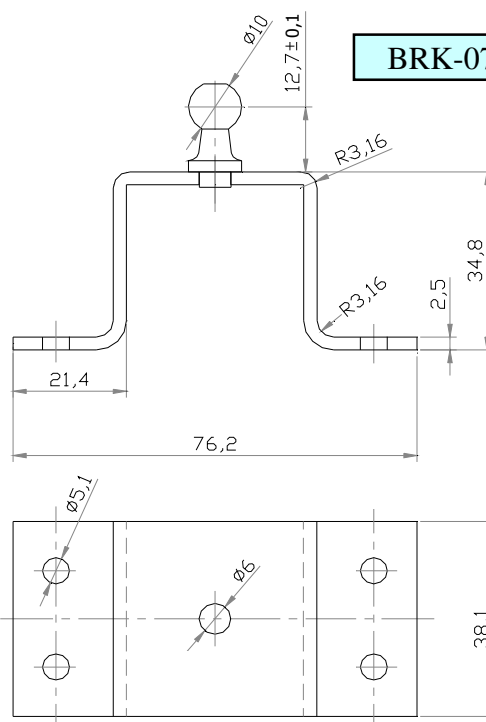
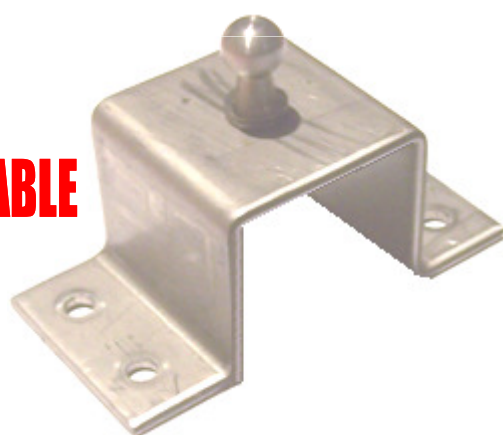


BRK-060D

**INOX AVAILABLE**



**INOX AVAILABLE**



BRK-070

### BRACKET PRODUCTS

For a quotation, please look at types and select the code (s) you require.

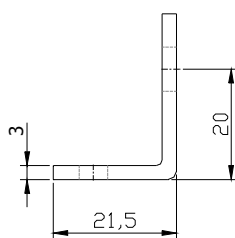
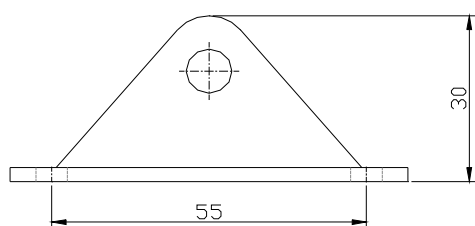
**Material:** Steel Sheet or Stainless Steel

**Protective Finish:** Zinc plated and yellow, white or black passivated.

You can look at technical pages for further information. See; Technical Pages.

**Special orders are acceptable. A technical drawing or a sample would be enough to produce**  
If you have any question, demand or queries, please do not hesitate to contact us.

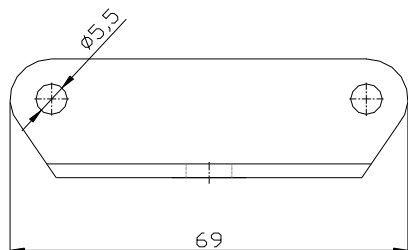
## BRACKET PRODUCTS



BKK-080

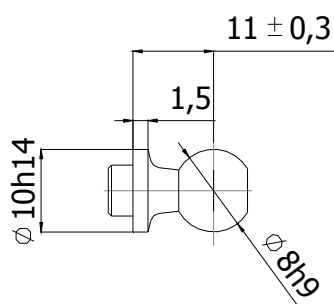


**INOX AVAILABLE**

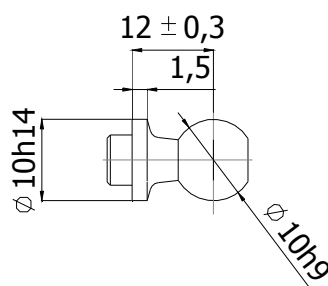


BRACKET CODE	S. CODE	F.CODE
BRK - 081	BRK-080	BKK-08
BRK - 082	BRK-080	BKK-10
BRK - 083	BRK-080	BKK-13
BRK - 084	BRK-080	BKK6 - H
BRK - 085	BRK-080	BKK8 - H

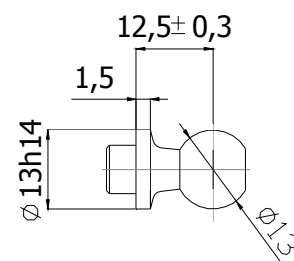
BKK-08



BKK-10



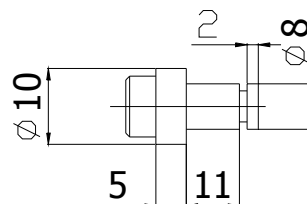
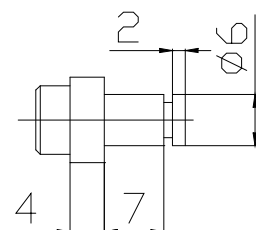
BKK-13



BKK6-H



BKK8-H



### BRACKET PRODUCTS

For a quotation, please look at types and select the code (s) you require.

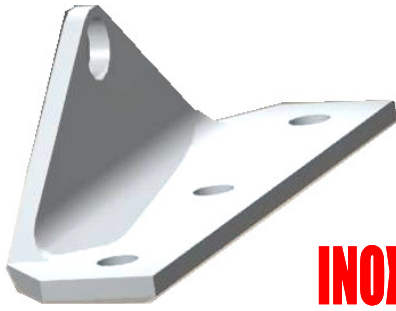
Material: Steel Sheet or Stainless Steel

Protective Finish: Zinc plated and yellow, white or black passivated.

You can look at technical pages for further information. See; Technical Pages.

**Special orders are acceptable. A technical drawing or a sample would be enough to produce**  
If you have any question, demand or queries, please do not hesitate to contact us.

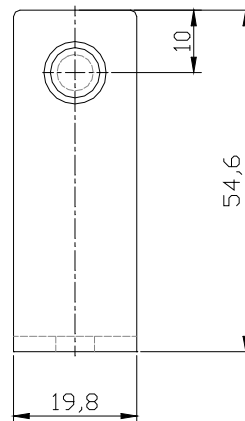
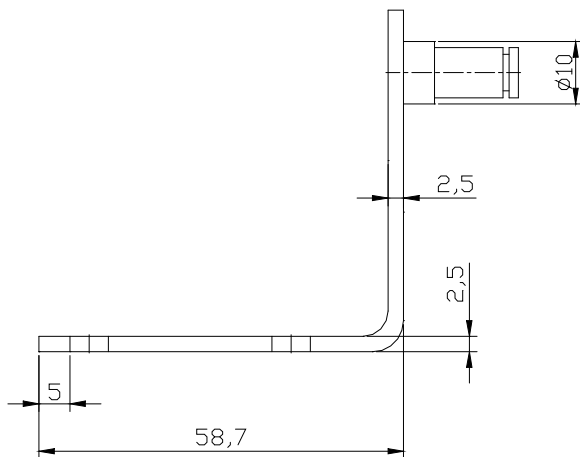
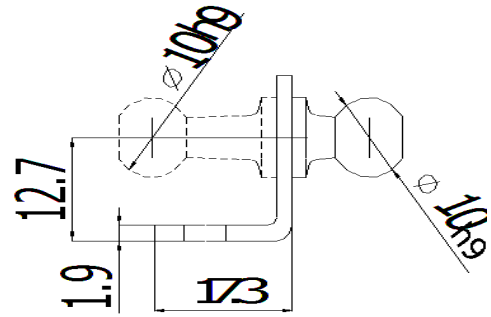
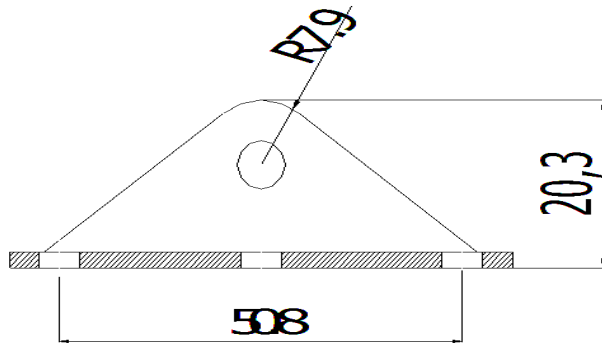
## BRACKET PRODUCTS



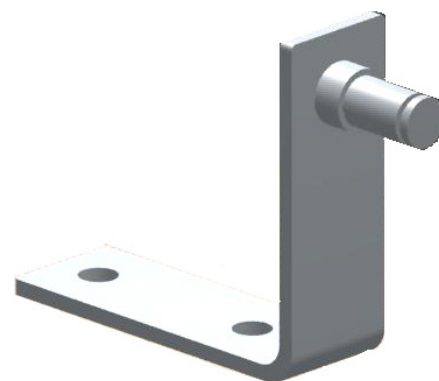
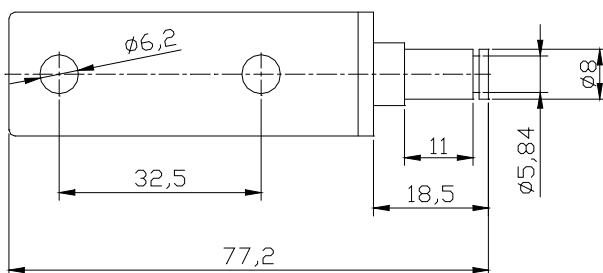
**INOX AVAILABLE**

BRK-052L

BRK-052R



BRK - 280



## BRACKET PRODUCTS

For a quotation, please look at types and select the code (s) you require.

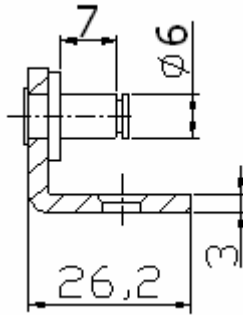
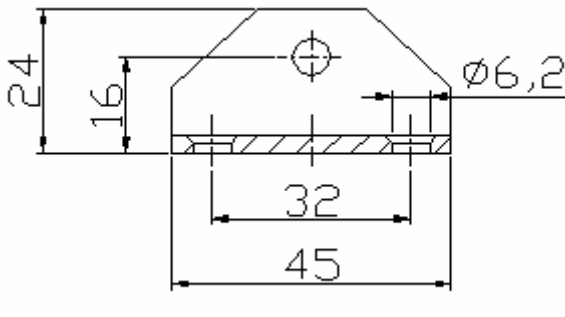
**Material:** Steel Sheet or Stainless Steel

**Protective Finish:** Zinc plated and yellow, white or black passivated.

You can look at technical pages for further information. See; Technical Pages.

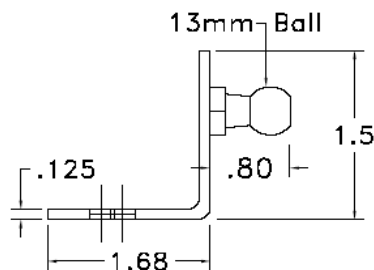
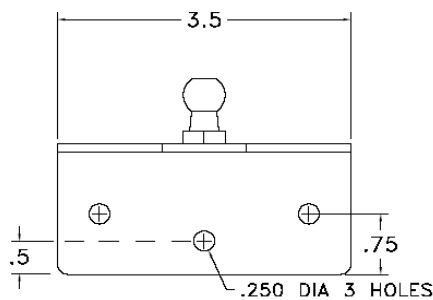
**Special orders are acceptable. A technical drawing or a sample would be enough to produce**  
If you have any question, demand or queries, please do not hesitate to contact us.

## BRACKET PRODUCTS



BRK - 284

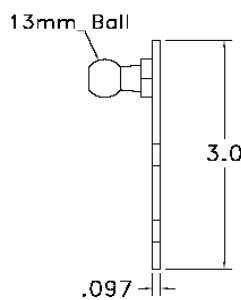
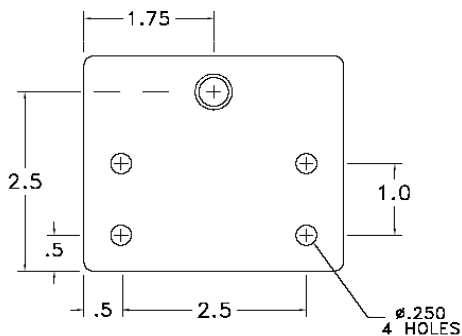
BRACKET CODE	S. CODE	F.CODE
BRK - 281	BRK-280	BKK-68
BRK - 282	BRK-280	BKK-610
BRK - 283	BRK-280	BKK-613
BRK - 284	BRK-280	BKK6-6H
BRK - 285	BRK-280	BKK8-8H



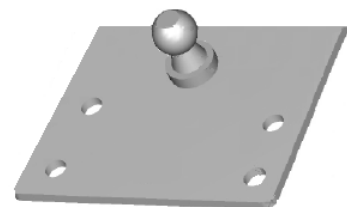
**INOX AVAILABLE**



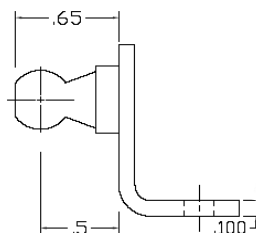
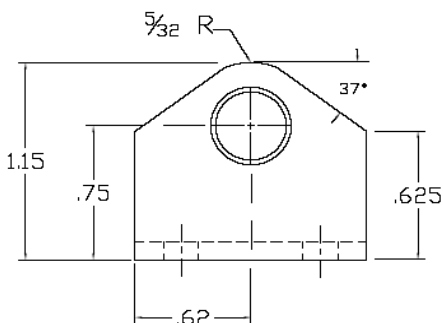
BRK - 290



**INOX AVAILABLE**



BRK - 291



**INOX AVAILABLE**



BRK - 292

### BRACKET PRODUCTS

For a quotation, please look at types and select the code (s) you require.

**Material:** Steel Sheet or Stainless Steel

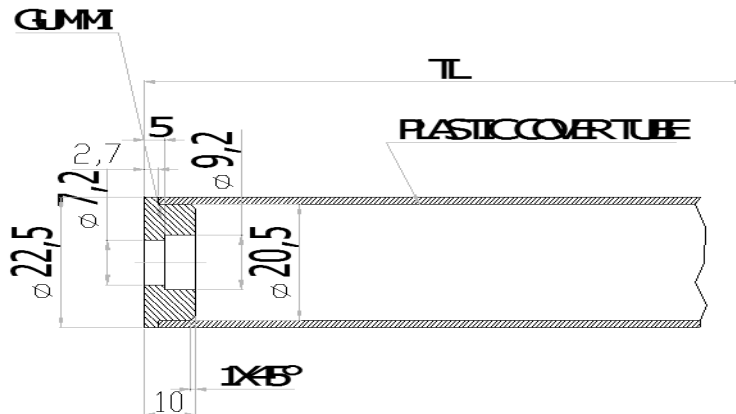
**Protective Finish:** Zinc plated and yellow, white or black passivated.

You can look at technical pages for further information. See; Technical Pages.

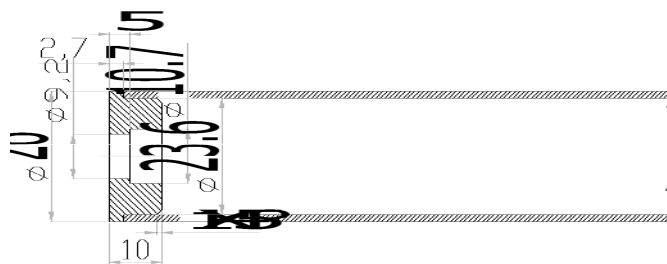
**Special orders are acceptable. A technical drawing or a sample would be enough to produce**  
If you have any question, demand or queries, please do not hesitate to contact us.



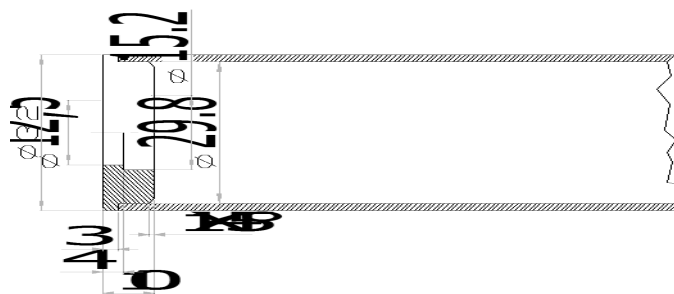
## PROTECTION TUBE-PLASTIC



Ø8/Ø18-APLICACION



Ø10/Ø22-APLICACION



Ø14/Ø28-APLICACION

### PROTECTION TUBE - PLASTIC

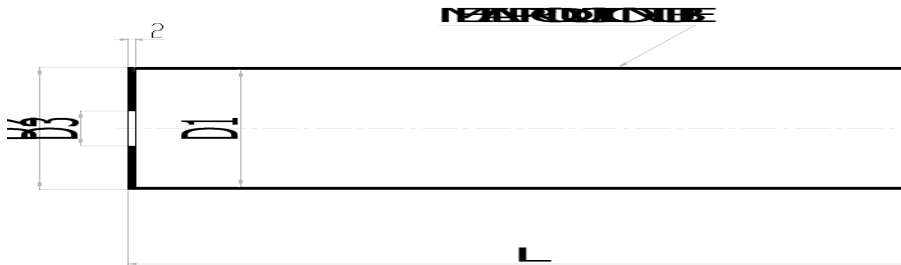
For a quotation, please look at types and select the APLICACION (s) you require.

Material: Plastic-black

You can look at technical pages for further information. See; Technical Pages.

**Special orders are acceptable. A technical drawing or a sample would be enough to produce**  
If you have any question, demand or queries, please do not hesitate to contact us.

## LOCKING-PROTECTION TUBE-METAL



CODE	D3	D1	D2	L
MTP8-18-L				
MTP10-22-L				
MTP10-27-L				
MTP14-27-L				

PLASTIC BUTTON

METAL TUBE



SPRING MECHANISM

### LOCKING-PROTECTION TUBE-METAL

For a quotation, please look at types and select the MODEL (s) you require, and contact us for technical drawings.

**Material:** metal tube: Steel Sheet or Stainless Steel

**Protective Finish:** metal tube: painting.

You can look at technical pages for further information. See; Technical Pages.

**Special orders are acceptable. A technical drawing or a sample would be enough to produce**

If you have any question, demand or queries, please do not hesitate to contact us.

- These items will be ready soon



\*\*\*Please feel free to contact us for your new projects or for current items you have problem regarding quality or you pay expensive amounts.\*\*\*

# contact

able goods

Gummiprofile | Gasfedern | Aluminiumprofile | Rollen+Räder | und mehr  
rubber profiles | gas springs | aluminium profiles | castors+wheels | and more

E. Ilter Dipl.-Ing.(FH)

Kolpingstr. 46

D-41462 Neuss

Ust-idNr.: DE247723134

Economic Operators Registration

and Identification Number: DE000000007244339

+49 (0)2131-4740547

skype: able-goods

info@able-goods.de

www.able-goods.de